



# TERCELO PCR CATALOGUE

*Rolling Forward*

2025-2026.V1

**TERCELO TIRE GROUP CO., LTD.**

📍 Address: Room 803&804, T7-SIIC, No.195 Hong Kong East Road, Qingdao, China

☎ +86-532-80990226

✉ E: info@tercelo.com

🌐 www.tercelo.com





Since TERCELO enters the market, it shows a new looking to end users.

**Total supplier**

TERCELO covers premium quality of PCR, TBR, OTR, GIANT OTR, Radial AGR for a variety of purposes, all tyres meet all internationally required manufacturing standards including DOT, ECE,R117, GCC, SNI, NOM, INMETRO and also quality control certifications include ISO9001.



**Quality**

TERCELO focuses on quality and end users, we are trying to build professional and high-end manufacturing by high-class raw material, advanced hardware and technology, strict innovation. Our experienced technical and management teams can guarantee that all tyres are continuously tested and developed to ensure product performance consistency.

**Service**

TERCELO offers proven quality: ranging from our qualified and helpful pre-sales and after-sales service team to our cooperation all throughout the market.

**Research & Development**

We cooperated with colleges and universities to establish research institute. Our engineers and technicians are always on the look-out for new ways to improve the tyres we offer, so TERCELO continues to meet the needs of the market.

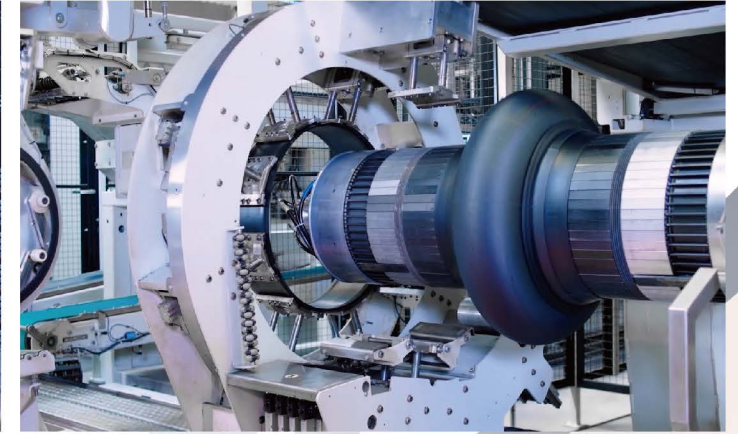


**No.150**

Global Fortune 500 Company

**No.45**

**TIRE BUSINESS** ranks the Top 75 tire makers of 2024



# PRODUCT CONTENTS



EV



TAMIR EV01  
P01-P02



HP



Citytrip Pro C6  
P03-P04



Tercesis ECO  
P05-P06



UHP



SPORT D1  
P07-P10



Tercesport TU06  
P11-P12



SUV



Citytrip U6  
P13-P14



SOLITUDE  
P15-P16



AT



TERBLEND TA01  
P17-P18



TERBLEND TA02  
P19-P20



WZR505  
P21-P22



XT/RT



TerceVita TX01  
P23-P24



TERCEMAXI TR01  
P25-P26



MT



Toughevo TM01  
P27-P28



VAN



WZT705  
P29-P30



Terceland TC02  
P31-P32



Terceland TC03  
P33-P34



ALL SEASON



CROSEASON 4S  
P35-P38



CROSEASON VAN  
P39-P40



SNOW



FROST BITE TW01  
P45-P46



ICE KNIGHT  
P41-P44



FREEZE S1  
P41-P44



Blue Snow  
P47-P48



ECOSNOW 4X4  
P41-P44



FREEZE 4X4  
P41-P44



WINTER DEFENDER  
P41-P44



EV



# TAMIR EVO 1



### Wide Tread Profile Design

The optimized tread profile enhances the rigidity of the tread blocks, ensuring superior load-bearing capacity for the tire



### Optimized Tread Pattern Design

The design of the tread steel plates and groove angles is refined to respond promptly to control changes, improving handling



### Quiet Noise Reduction Design

The tread grooves are designed with varying depths to attenuate noise generated by air flow within the grooves, significantly reducing road noise and optimizing tire noise for increased comfort



### Application of New Materials

The use of a new generation of solution-polymerized styrene-butadiene rubber (S-SBR) formulations, in conjunction with the application of new materials, greatly reduces tire rolling resistance and enhances vehicle driving range

M+S



Comfort



Low noise



Dry handling



Long range

# TAMIR EVO 1



| INCH | Size         | LI/SS | XL | Measuring Rim | Section Width (mm) | Overall Diameter (mm) | Max.Load (kg) | Max.Pressure (KPA) | UTQG  |   |   |   |
|------|--------------|-------|----|---------------|--------------------|-----------------------|---------------|--------------------|-------|---|---|---|
| 18   | 215/50ZR18   | 92W   | -  | 7J            | 226                | 673                   | 630           | 300                | 380AA | B | B | B |
|      | * 215/55R18  | 99V   | XL | 7J            | 226                | 693                   | 775           | 340                | 380AA | B | B | B |
|      | 225/60R18    | 104V  | XL | 6½J           | 228                | 727                   | 900           | 340                | 380AA | B | B | B |
|      | 235/45ZR18   | 98W   | XL | 8J            | 236                | 669                   | 750           | 340                | 380AA | B | B | B |
|      | 235/60R18    | 107H  | XL | 7J            | 240                | 739                   | 975           | 340                | 380AA | B | B | B |
|      | * 245/50ZR18 | 104W  | XL | 7½J           | 253                | 703                   | 900           | 340                | 380AA | B | B | B |
| 19   | * 235/40ZR19 | 96W   | XL | 8½J           | 241                | 671                   | 710           | 340                | 380AA | B | B | B |
|      | 235/50R19    | 99V   | -  | 7½J           | 245                | 719                   | 775           | 300                | 380AA | B | B | B |
|      | * 235/55R19  | 105V  | XL | 7½J           | 245                | 741                   | 925           | 340                | 380AA | B | B | B |
|      | 245/45ZR19   | 102Y  | XL | 8J            | 243                | 703                   | 850           | 340                | 380AA | B | B | B |
|      | 255/45ZR19   | 104Y  | XL | 8½J           | 255                | 703                   | 900           | 340                | 380AA | B | B | B |
|      | * 255/55R19  | 111V  | XL | 8J            | 265                | 763                   | 1090          | 340                | 380AA | A | B | B |
| 20   | 235/50ZR20   | 104W  | XL | 7½J           | 245                | 744                   | 900           | 340                | 380AA | B | B | B |
|      | 245/45ZR20   | 103W  | XL | 8J            | 243                | 728                   | 875           | 340                | 380AA | B | B | B |
|      | * 255/40ZR20 | 101W  | XL | 9J            | 260                | 712                   | 825           | 340                | 380AA | B | B | B |
|      | * 255/45ZR20 | 105W  | -  | 8½J           | 255                | 738                   | 825           | 300                | 380AA | B | B | B |
|      | 255/50R20    | 109V  | XL | 8J            | 265                | 764                   | 1030          | 340                | 380AA | A | B | B |
|      | * 255/45ZR21 | 106W  | XL | 8½J           | 255                | 763                   | 950           | 340                | 380AA | B | B | B |
| 21   | 265/45ZR21   | 108W  | XL | 9J            | 266                | 771                   | 1000          | 340                | 380AA | B | B | B |
|      | * 265/40ZR22 | 106W  | XL | 9½J           | 271                | 771                   | 950           | 340                | 380AA | B | B | B |

\* Coming soon



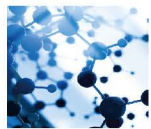


# Citytrip Pro C6

| SW   | Series | Number of groove |
|------|--------|------------------|
| <165 | all    | 3                |
| >175 | all    | 4                |



**Excellent Comfort Performance**  
Utilizing simulation technology, the tire features a five-pitch variation and a staggered tread block pattern to reduce road noise, delivering a quiet and comfortable driving experience.



**Long-lasting Durability:**  
By optimizing the material formula, the tire achieves high elasticity, toughness, and wear resistance for extended service life.



**Reliable Safety Performance:**  
Incorporating an innovative high-strength carcass cord structure, the tire enhances carcass strength, improving impact resistance and reducing the risk of damage.

M+S



Comfort



High performance



Asymmetrical pattern

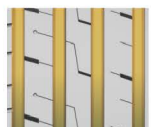
# Citytrip Pro C6

| INCH | Size       | LI/SS   | XL | Measuring Rim | Section Width (mm) | Overall Diameter (mm) | Max.Load (kg) | Max.Pressure (KPA) | UTQG  |   |   |   |
|------|------------|---------|----|---------------|--------------------|-----------------------|---------------|--------------------|-------|---|---|---|
| 13   | 155/65R13  | 73T     | -  | 4½J           | 157                | 532                   | 365           | 300                | 400AA | D | D | B |
|      | 155/80R13  | 79T     | -  | 4½J           | 157                | 578                   | 437           | 300                | 400AA | D | D | B |
|      | 165/65R13  | 77T     | -  | 5J            | 170                | 544                   | 412           | 300                | 400AA | D | C | B |
|      | 175/70R13  | 82T     | -  | 5J            | 177                | 576                   | 475           | 300                | 400AA | C | C | B |
|      | 185/70R13  | 86H     | -  | 5½J           | 189                | 590                   | 530           | 300                | 400AA | C | C | B |
| 14   | 155/65R14  | 75T     | -  | 4½J           | 157                | 558                   | 387           | 300                | 400AA | D | D | B |
|      | 165/60R14  | 75H     | -  | 5J            | 170                | 554                   | 387           | 300                | 400AA | D | C | B |
|      | 165/70R14  | 85T     | XL | 5J            | 170                | 588                   | 515           | 340                | 400AA | C | D | B |
|      | 175/65R14  | 82T/82H | -  | 5J            | 177                | 584                   | 475           | 300                | 400AA | C | C | B |
|      | 175/70R14  | 84T     | -  | 5J            | 177                | 602                   | 500           | 300                | 400AA | C | C | B |
|      | 185/60R14  | 82H     | -  | 5½J           | 189                | 578                   | 475           | 300                | 400AA | C | C | B |
|      | 185/65R14  | 86H     | -  | 5½J           | 189                | 596                   | 530           | 300                | 400AA | C | C | B |
|      | 185/70R14  | 88H     | -  | 5½J           | 189                | 616                   | 560           | 300                | 400AA | C | C | B |
|      | 195/70R14  | 91H     | -  | 6J            | 201                | 630                   | 615           | 300                | 400AA | C | C | B |
|      | 205/70R14  | 95H     | -  | 6J            | 209                | 644                   | 690           | 300                | 400AA | C | C | B |
| 15   | 175/65R15  | 84H     | -  | 5J            | 177                | 609                   | 500           | 300                | 400AA | C | D | B |
|      | 185/55R15  | 86V     | XL | 6J            | 194                | 585                   | 530           | 340                | 480AA | C | C | B |
|      | 185/60R15  | 84H     | -  | 5½J           | 189                | 603                   | 500           | 300                | 480AA | C | C | B |
|      | 185/65R15  | 88H     | -  | 5½J           | 189                | 621                   | 560           | 300                | 400AA | C | D | B |
|      | 195/50R15  | 82V     | -  | 6J            | 201                | 577                   | 475           | 300                | 480AA | D | C | B |
|      | 195/55R15  | 85V     | -  | 6J            | 201                | 595                   | 515           | 300                | 480AA | C | C | B |
|      | 195/60R15  | 88V/88H | -  | 6J            | 201                | 615                   | 560           | 300                | 480AA | C | C | B |
|      | 195/65R15  | 91H/91V | -  | 6J            | 201                | 635                   | 615           | 300                | 400AA | C | C | B |
|      | 205/60R15  | 91V     | -  | 6J            | 209                | 627                   | 615           | 300                | 400AA | C | C | B |
|      | 205/65R15  | 94V     | -  | 6J            | 209                | 647                   | 670           | 300                | 400AA | C | C | B |
| 16   | 205/70R15  | 96H     | -  | 6J            | 209                | 669                   | 710           | 300                | 400AA | C | C | B |
|      | 215/70R15  | 98H     | -  | 6½J           | 221                | 683                   | 750           | 300                | 400AA | C | C | B |
|      | 185/55R16  | 83V     | -  | 6J            | 194                | 610                   | 487           | 300                | 400AA | D | C | B |
|      | 195/45R16  | 84V     | XL | 6½J           | 195                | 582                   | 500           | 340                | 480AA | D | C | B |
|      | 195/50R16  | 84V     | -  | 6J            | 201                | 602                   | 500           | 300                | 480AA | D | C | B |
|      | 195/55R16  | 91V     | XL | 6J            | 201                | 620                   | 615           | 340                | 480AA | C | C | B |
|      | 205/45ZR16 | 87W     | XL | 7J            | 206                | 590                   | 545           | 340                | 480AA | C | C | B |
|      | 205/50R16  | 87V     | -  | 6½J           | 214                | 612                   | 545           | 300                | 480AA | C | C | B |
|      | 205/55R16  | 91V     | -  | 6½J           | 214                | 632                   | 615           | 300                | 400AA | C | C | B |
|      | 205/55ZR16 | 94W     | XL | 6½J           | 214                | 632                   | 670           | 340                | 400AA | C | C | B |
| 16   | 205/60R16  | 92V/92H | -  | 6J            | 209                | 652                   | 630           | 300                | 480AA | C | C | B |
|      | 205/65R16  | 95V     | -  | 6J            | 209                | 672                   | 690           | 300                | 400AA | C | C | B |
|      | 215/55ZR16 | 97W     | XL | 7J            | 226                | 642                   | 730           | 340                | 480AA | C | C | B |
|      | 215/60R16  | 99V     | XL | 6½J           | 221                | 664                   | 775           | 340                | 400AA | C | C | B |
|      | 215/65R16  | 98V     | -  | 6½J           | 221                | 686                   | 750           | 300                | 480AA | C | C | B |



# Tercesis ECO

| SW    | Series | Number of groove |
|-------|--------|------------------|
| ≤ 185 | all    | 3                |
| 195   | ≥ 60   | 3                |
|       | ≤ 55   | 4                |
| ≥ 205 | all    | 4                |



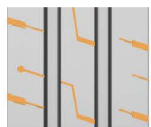
### Optimum Groove Width Ratio

The 4 main grooves use the optimal width ratio to ensure the optimal contact area with the road surface, improve drainage performance, and thus promote traction on wet and slippery road surfaces.



### Optimize pitch design

The disorderly arrangement of multi-pitches increases comfortable feelings while reducing rolling resistance during driving, saving energy and fuel.



### Diagonal pattern design to optimize braking performance

Optimize the pattern angle and respond to braking changes in time, resulting in excellent braking performance on wet and slippery roads.



### Asymmetric pattern, highlighting handling performance

3D technology is applied to strengthen the strength of tread blocks, and asymmetric design is adopted to enhance road control performance.



### New formula

Play a role in heat dissipation.  
New Tread Design  
Upgrade Technology Formula

M+S



Comfort



High performance



Asymmetrical pattern

# Tercesis ECO

| INCH | Size       | LI/SS | XL | Measuring Rim | Section Width (mm) | Overall Diameter (mm) | Max.Load (kg) | Max.Pressure (KPA) | UTQG  |   |   |   |
|------|------------|-------|----|---------------|--------------------|-----------------------|---------------|--------------------|-------|---|---|---|
| 13   | 175/70R13  | 82T   | -  | 5J            | 177                | 576                   | 475           | 300                | 320AA | B | C | B |
|      | 175/65R14  | 82H   | -  | 5J            | 177                | 584                   | 475           | 300                | 320AA | B | C | B |
| 14   | 175/70R14  | 84T   | -  | 5J            | 177                | 602                   | 500           | 300                | 320AA | B | C | B |
|      | 185/55R15  | 82V   | -  | 6J            | 194                | 585                   | 475           | 300                | 320AA | C | C | B |
|      | 185/60R15  | 88H   | XL | 5½J           | 189                | 603                   | 560           | 340                | 320AA | C | C | B |
| 15   | 185/65R15  | 88H   | -  | 5½J           | 189                | 621                   | 560           | 300                | 320AA | B | C | B |
|      | 195/50R15  | 82V   | -  | 6J            | 201                | 577                   | 475           | 300                | 320AA | C | C | B |
|      | 195/55R15  | 85V   | -  | 6J            | 201                | 595                   | 515           | 300                | 320AA | C | C | B |
|      | 195/60R15  | 88V   | -  | 6J            | 201                | 615                   | 560           | 300                | 320AA | C | C | B |
|      | 195/65R15  | 91V   | -  | 6J            | 201                | 635                   | 615           | 300                | 320AA | C | C | B |
|      | 205/65R15  | 94H   | -  | 6J            | 209                | 647                   | 670           | 300                | 320AA | C | C | B |
|      | 195/55R16  | 87V   | -  | 6J            | 201                | 620                   | 545           | 300                | 320AA | C | C | B |
| 16   | 205/55R16  | 91V   | -  | 6½J           | 214                | 632                   | 615           | 300                | 320AA | C | C | B |
|      | 205/60R16  | 92V   | -  | 6J            | 209                | 652                   | 630           | 300                | 320AA | C | C | B |
|      | 215/55ZR16 | 97W   | XL | 7J            | 226                | 642                   | 730           | 340                | 320AA | C | C | B |
|      | 215/60R16  | 95H   | -  | 6½J           | 221                | 664                   | 690           | 300                | 320AA | C | C | B |
| 17   | 205/45ZR17 | 88W   | XL | 7J            | 206                | 616                   | 560           | 340                | 320AA | C | C | B |
|      | 205/50ZR17 | 93W   | XL | 6½J           | 214                | 638                   | 650           | 340                | 320AA | C | C | B |
|      | 215/45ZR17 | 91W   | XL | 7J            | 213                | 626                   | 615           | 340                | 320AA | C | C | B |
|      | 215/50ZR17 | 95W   | XL | 7J            | 226                | 648                   | 690           | 340                | 320AA | C | C | B |
|      | 215/55ZR17 | 98W   | XL | 7J            | 226                | 668                   | 750           | 340                | 320AA | C | C | B |
|      | 225/45ZR17 | 94W   | XL | 7½J           | 225                | 634                   | 670           | 340                | 320AA | C | C | B |
|      | 225/50ZR17 | 98W   | XL | 7J            | 233                | 658                   | 750           | 340                | 320AA | C | C | B |
| 18   | 225/40ZR18 | 92W   | XL | 8J            | 230                | 637                   | 630           | 340                | 320AA | C | C | B |
|      | 245/45ZR18 | 100W  | XL | 8J            | 243                | 677                   | 800           | 340                | 320AA | C | B | B |



UHP



# SPORT D1

M+S



Comfort



High performance



Asymmetrical pattern

# SPORT D1

| INCH       | Size       | LI/SS | XL  | Measuring Rim | Section Width (mm) | Overall Diameter (mm) | Max.Load (kg) | Max.Pressure (KPA) | UTQG  |   |   |   |
|------------|------------|-------|-----|---------------|--------------------|-----------------------|---------------|--------------------|-------|---|---|---|
| 15         | 185/55R15  | 86V   | XL  | 6J            | 194                | 585                   | 530           | 340                | 320AA | D | B | B |
|            | 185/60R15  | 88H   | XL  | 5½J           | 189                | 603                   | 560           | 340                | 320AA | D | B | B |
|            | 195/50R15  | 82V   | -   | 6J            | 201                | 577                   | 475           | 300                | 320AA | D | B | B |
|            | 195/55R15  | 85V   | -   | 6J            | 201                | 595                   | 515           | 300                | 320AA | D | B | B |
|            | 195/60R15  | 88V   | -   | 6J            | 201                | 615                   | 560           | 300                | 320AA | D | B | B |
|            | 195/65R15  | 95H   | XL  | 6J            | 201                | 635                   | 690           | 340                | 320AA | C | C | B |
| 16         | 185/55R16  | 87V   | XL  | 6J            | 194                | 610                   | 545           | 340                | 320AA | D | B | B |
|            | 195/45R16  | 84V   | XL  | 6½J           | 195                | 582                   | 500           | 340                | 320AA | D | B | B |
|            | 195/50R16  | 88V   | XL  | 6J            | 201                | 602                   | 560           | 340                | 320AA | D | B | B |
|            | 195/55R16  | 87V   | -   | 6J            | 201                | 620                   | 545           | 300                | 320AA | D | B | B |
|            | 205/50ZR16 | 91W   | XL  | 6½J           | 214                | 612                   | 615           | 340                | 320AA | D | B | B |
|            | 205/55ZR16 | 94W   | XL  | 6½J           | 214                | 632                   | 670           | 340                | 320AA | D | B | B |
| 17         | 215/45R16  | 90V   | XL  | 7J            | 213                | 600                   | 600           | 340                | 320AA | C | B | B |
|            | 215/55ZR16 | 97W   | XL  | 7J            | 226                | 642                   | 730           | 340                | 320AA | C | B | B |
|            | 225/55R16  | 99V   | XL  | 7J            | 233                | 654                   | 775           | 340                | 320AA | C | B | B |
|            | 205/40ZR17 | 84W   | XL  | 7½J           | 212                | 596                   | 500           | 340                | 320AA | D | B | B |
|            | 205/45ZR17 | 84W   | -   | 7J            | 206                | 616                   | 500           | 300                | 320AA | D | B | B |
|            | 205/50ZR17 | 93W   | XL  | 6½J           | 214                | 638                   | 650           | 340                | 320AA | C | B | B |
|            | 205/55ZR17 | 95W   | XL  | 6½J           | 214                | 658                   | 690           | 340                | 320AA | C | B | B |
|            | 215/40ZR17 | 87W   | XL  | 7½J           | 218                | 604                   | 545           | 340                | 320AA | D | B | B |
|            | 215/45ZR17 | 91W   | XL  | 7J            | 213                | 626                   | 615           | 340                | 320AA | C | B | B |
|            | 215/50ZR17 | 95W   | XL  | 7J            | 226                | 648                   | 690           | 340                | 320AA | C | B | B |
|            | 215/55ZR17 | 98W   | XL  | 7J            | 226                | 668                   | 750           | 340                | 320AA | C | B | B |
|            | 225/45ZR17 | 94W   | XL  | 7½J           | 225                | 634                   | 670           | 340                | 320AA | C | B | B |
| 225/50ZR17 | 98W        | XL    | 7J  | 233           | 658                | 750                   | 340           | 320AA              | C     | B | B |   |
| 225/55ZR17 | 101W       | XL    | 7J  | 233           | 680                | 825                   | 340           | 320AA              | C     | B | B |   |
| 235/45ZR17 | 97W        | XL    | 8J  | 236           | 644                | 730                   | 340           | 320AA              | C     | B | B |   |
| 235/50ZR17 | 100W       | XL    | 7½J | 245           | 668                | 800                   | 340           | 320AA              | C     | B | B |   |
| 235/55ZR17 | 103W       | XL    | 7½J | 245           | 690                | 875                   | 340           | 320AA              | C     | B | B |   |
| 245/45ZR17 | 99W        | XL    | 8J  | 243           | 652                | 775                   | 340           | 320AA              | C     | B | B |   |



### Asymmetric pattern design

The design of different patterns on the inside and outside ensures drainage, and at the same time increases the ground pressure of the outside pattern of the turning, bringing excellent cornering performance, continuous pattern ribs, and stable high-speed performance



### Geometric chamfered design

Prevent the curling effect of the tread block during braking, so that the pressure distribution of the tire contacting the ground is evenly distributed, and the ground contact area is effectively increased



### Noise blocking design

The outer continuous rib design blocks the transmission of tire noise, improves driving comfort, and at the same time improves straight-line driving performance and steering stability



### Quiet Design--Variable Pitch Simulation Analysis Technology




Using different sizes of tire blocks, optimized by computer simulation, the sound energy tends to be evenly dispersed in a wider frequency range, avoiding the occurrence of energy accumulation in the frequency band that the human ear can easily detect.



### Velvet Technology




The application of velvet technology, by changing the reflection of light to add black patterns, make the brand logo and sidewall patterns of the tires more clear and eye-catching

# SPORT D1

| INCH         | Size         | LI/SS | XL  | Measuring Rim | Section Width (mm) | Overall Diameter (mm) | Max.Load (kg) | Max.Pressure (KPA) | UTQG  |  |  |  |
|--------------|--------------|-------|-----|---------------|--------------------|-----------------------|---------------|--------------------|-------|---|---|---|
| 18           | * 215/35ZR18 | 84W   | XL  | 7½J           | 218                | 607                   | 500           | 340                | 320AA | D   | B   | B   |
|              | * 215/40ZR18 | 89W   | XL  | 7½J           | 218                | 629                   | 580           | 340                | 320AA | D   | B   | B   |
|              | 215/45ZR18   | 93W   | XL  | 7J            | 213                | 651                   | 650           | 340                | 320AA | C   | B   | B   |
|              | 215/50R18    | 92V   | -   | 7J            | 226                | 673                   | 630           | 300                | 320AA | D   | B   | B   |
|              | 215/55ZR18   | 99W   | XL  | 7J            | 226                | 693                   | 775           | 340                | 320AA | C   | B   | B   |
|              | 225/40ZR18   | 92W   | XL  | 8J            | 230                | 637                   | 630           | 340                | 320AA | D   | B   | B   |
|              | 225/45ZR18   | 95W   | XL  | 7½J           | 225                | 659                   | 690           | 340                | 320AA | C   | B   | B   |
|              | 225/50ZR18   | 95W   | -   | 7J            | 233                | 683                   | 690           | 300                | 320AA | D   | B   | B   |
|              | 225/55R18    | 98V   | -   | 7J            | 233                | 705                   | 750           | 300                | 320AA | D   | C   | B   |
|              | 235/40ZR18   | 95W   | XL  | 8½J           | 241                | 645                   | 690           | 340                | 320AA | C   | B   | B   |
|              | 235/45ZR18   | 98Y   | XL  | 8J            | 236                | 669                   | 750           | 340                | 320AA | C   | B   | B   |
|              | 235/50ZR18   | 101W  | XL  | 7½J           | 245                | 693                   | 825           | 340                | 320AA | C   | B   | B   |
|              | 235/55ZR18   | 104W  | XL  | 7½J           | 245                | 715                   | 900           | 340                | 320AA | C   | B   | B   |
|              | 245/40ZR18   | 97Y   | XL  | 8½J           | 248                | 653                   | 730           | 340                | 320AA | C   | B   | B   |
|              | 245/45ZR18   | 100W  | XL  | 8J            | 243                | 677                   | 800           | 340                | 320AA | C   | B   | B   |
|              | 245/50ZR18   | 104W  | XL  | 7½J           | 253                | 703                   | 900           | 340                | 320AA | C   | B   | B   |
|              | * 255/35ZR18 | 94W   | XL  | 9J            | 260                | 635                   | 670           | 340                | 320AA | C   | B   | B   |
|              | 255/40ZR18   | 99W   | XL  | 9J            | 260                | 661                   | 775           | 340                | 320AA | C   | B   | B   |
|              | 255/45ZR18   | 99W   | -   | 8½J           | 255                | 687                   | 775           | 300                | 320AA | D   | B   | B   |
|              | 255/55ZR18   | 109W  | XL  | 8J            | 265                | 737                   | 1030          | 340                | 320AA | C   | B   | B   |
| * 265/35ZR18 | 97Y          | XL    | 9½J | 271           | 643                | 730                   | 340           | 320AA              | C     | B   | B   |   |
| 19           | 225/45ZR19   | 96W   | XL  | 7½J           | 225                | 685                   | 710           | 340                | 320AA | C   | B   | B   |
|              | 225/55ZR19   | 103W  | XL  | 7J            | 233                | 731                   | 875           | 340                | 320AA | C   | B   | B   |
|              | 235/35ZR19   | 91W   | XL  | 8½J           | 241                | 647                   | 615           | 340                | 320AA | D   | B   | B   |
|              | 235/40ZR19   | 96W   | XL  | 8½J           | 241                | 671                   | 710           | 340                | 320AA | C   | B   | B   |
|              | 235/45ZR19   | 99W   | XL  | 8J            | 236                | 695                   | 775           | 340                | 320AA | C   | B   | B   |
|              | * 235/50ZR19 | 103W  | XL  | 7½J           | 245                | 719                   | 875           | 340                | 320AA | C   | B   | B   |
|              | 235/55ZR19   | 105W  | XL  | 7½J           | 245                | 741                   | 925           | 340                | 320AA | C   | B   | B   |
|              | 245/35ZR19   | 93W   | XL  | 8½J           | 248                | 655                   | 650           | 340                | 320AA | D   | B   | B   |
|              | 245/40ZR19   | 98Y   | XL  | 8½J           | 248                | 679                   | 750           | 340                | 320AA | C   | B   | B   |
|              | * 245/45ZR19 | 102Y  | XL  | 8J            | 243                | 703                   | 850           | 340                | 320AA | C   | B   | B   |
|              | 255/35ZR19   | 96Y   | XL  | 9J            | 260                | 661                   | 710           | 340                | 320AA | D   | B   | B   |
|              | 255/40ZR19   | 100W  | XL  | 9J            | 260                | 687                   | 800           | 340                | 320AA | C   | B   | B   |
| * 255/50ZR19 | 107W         | XL    | 8J  | 265           | 739                | 975                   | 340           | 320AA              | C     | B   | B   |   |
| * 255/55ZR19 | 111W         | XL    | 8J  | 265           | 763                | 1090                  | 340           | 320AA              | C     | B   | B   |   |
| 275/35ZR19   | 100Y         | XL    | 9½J | 278           | 675                | 800                   | 340           | 320AA              | D     | B   | B   |   |
| 275/40ZR19   | 105W         | XL    | 9½J | 278           | 703                | 925                   | 340           | 320AA              | C     | B   | B   |   |

\* Coming soon

# SPORT D1

| INCH | Size         | LI/SS | XL | Measuring Rim | Section Width (mm) | Overall Diameter (mm) | Max.Load (kg) | Max.Pressure (KPA) | UTQG  |  |  |  |
|------|--------------|-------|----|---------------|--------------------|-----------------------|---------------|--------------------|-------|---|---|---|
| 20   | * 245/40ZR20 | 99Y   | XL | 8½J           | 248                | 704                   | 775           | 340                | 320AA | C   | B   | B   |
|      | * 245/45ZR20 | 103Y  | XL | 8J            | 243                | 728                   | 875           | 340                | 320AA | C   | B   | B   |
|      | 245/50R20    | 102V  | -  | 7½J           | 253                | 754                   | 850           | 300                | 320AA | D   | B   | B   |
|      | 255/40ZR20   | 101Y  | XL | 9J            | 260                | 712                   | 825           | 340                | 320AA | C   | B   | B   |
|      | * 255/45ZR20 | 105W  | XL | 8½J           | 255                | 738                   | 925           | 340                | 320AA | C   | B   | B   |
|      | 255/50ZR20   | 109Y  | XL | 8J            | 265                | 764                   | 1030          | 340                | 320AA | C   | B   | B   |
|      | 265/40ZR20   | 104W  | XL | 9½J           | 271                | 720                   | 900           | 340                | 320AA | C   | B   | B   |
|      | * 265/50ZR20 | 111W  | XL | 8½J           | 277                | 774                   | 1090          | 340                | 320AA | C   | B   | B   |
|      | * 275/40ZR20 | 106W  | XL | 9½J           | 278                | 728                   | 950           | 340                | 320AA | C   | B   | B   |
|      | 275/45R20    | 110V  | XL | 9J            | 273                | 756                   | 1060          | 340                | 320AA | C   | B   | B   |
|      | 275/50R20    | 109V  | -  | 8½J           | 284                | 784                   | 1030          | 300                | 320AA | D   | B   | B   |
|      | 285/50R20    | 116V  | XL | 9J            | 297                | 794                   | 1250          | 340                | 320AA | C   | B   | B   |
| 21   | 255/45ZR21   | 102W  | -  | 8½J           | 255                | 763                   | 850           | 300                | 320AA | D   | B   | B   |
|      | 265/40ZR21   | 105Y  | XL | 9½J           | 271                | 745                   | 925           | 340                | 320AA | C   | B   | B   |
|      | 265/45ZR21   | 104Y  | -  | 9J            | 266                | 771                   | 900           | 300                | 320AA | D   | B   | B   |
|      | 275/45ZR21   | 110Y  | XL | 9J            | 273                | 781                   | 1060          | 340                | 320AA | C   | B   | B   |
| 22   | 275/40ZR22   | 107Y  | XL | 9½J           | 278                | 779                   | 975           | 340                | 320AA | C   | B   | B   |

\* Coming soon



# Tercesport TU06

M+S



Comfort



High performance



Asymmetrical pattern

## Tercesport TU06

| INCH | Size      | LI/SS | XL | Measuring Rim | Section Width (mm) | Overall Diameter (mm) | Max.Load (kg) | Max.Pressure (KPA) | UTQG  |   |   |   |
|------|-----------|-------|----|---------------|--------------------|-----------------------|---------------|--------------------|-------|---|---|---|
| 15   | 295/50R15 | 108H  | XL | 9½J           | 309                | 677                   | 2205          | 340                | 420AA | C | B | B |
| 18   | 265/60R18 | 110V  | -  | 8J            | 272                | 775                   | 2337          | 300                | 420AA | C | B | B |
| 20   | 265/50R20 | 111W  | XL | 8½J           | 277                | 774                   | 2403          | 340                | 420AA | C | B | B |



### Asymmetric pattern design

Asymmetric pattern design, inner continuous grooves provide excellent drainage performance, ensuring and excellent ground grip



### Wide grounding design

Wide ground contact design improves ground adhesion



### Centrally Oriented continuous ribs

Centrally oriented continuous ribs on the crown maintain straight-line stability of the tire's ride



### Variable pitch pattern design

The pattern variable pitch design can reduce tire noise and improve driving comfort



SUV



# Citytrip U6

M+S



Comfort



High performance



Symmetrical pattern

## Citytrip U6

| INCH | Size        | LI/SS | XL | Measuring Rim | Section Width (mm) | Overall Diameter (mm) | Max.Load (kg) | Max.Pressure (KPA) | UTQG  |   |   |   |
|------|-------------|-------|----|---------------|--------------------|-----------------------|---------------|--------------------|-------|---|---|---|
| 15   | * 215/75R15 | 100H  | -  | 6J            | 216                | 703                   | 800           | 300                | 440AA | C | C | B |
|      | * 225/75R15 | 102H  | -  | 6J            | 223                | 719                   | 850           | 300                | 440AA | C | C | B |
|      | * 235/75R15 | 105T  | -  | 6½J           | 235                | 733                   | 925           | 300                | 440AA | C | C | B |
|      | * 265/70R15 | 112T  | -  | 8J            | 272                | 753                   | 1120          | 300                | 440AA | B | C | B |
| 16   | * 215/70R16 | 100H  | -  | 6½J           | 221                | 708                   | 800           | 300                | 440AA | C | C | B |
|      | * 225/65R16 | 100H  | -  | 6½J           | 228                | 698                   | 800           | 300                | 440AA | C | C | B |
|      | * 225/70R16 | 102T  | -  | 6½J           | 228                | 722                   | 850           | 300                | 440AA | C | C | B |
|      | * 235/65R16 | 103T  | -  | 7J            | 240                | 712                   | 875           | 300                | 440AA | C | C | B |
|      | * 235/70R16 | 106H  | -  | 7J            | 240                | 736                   | 950           | 300                | 440AA | B | C | B |
|      | * 245/70R16 | 107H  | -  | 7J            | 248                | 750                   | 975           | 300                | 440AA | B | C | B |
|      | * 255/65R16 | 109H  | -  | 7½J           | 260                | 738                   | 1030          | 300                | 440AA | B | C | B |
|      | * 255/70R16 | 111T  | -  | 7½J           | 260                | 764                   | 1090          | 300                | 440AA | B | C | B |
|      | * 265/70R16 | 112H  | -  | 8J            | 272                | 778                   | 1120          | 300                | 440AA | B | C | B |
|      | * 275/70R16 | 114T  | -  | 8J            | 279                | 792                   | 1180          | 300                | 440AA | B | C | B |
| 17   | * 215/60R17 | 96H   | -  | 6½J           | 221                | 690                   | 710           | 300                | 440AA | C | C | B |
|      | * 215/65R17 | 99H   | -  | 6½J           | 221                | 712                   | 775           | 300                | 440AA | C | C | B |
|      | * 225/60R17 | 99H   | -  | 6½J           | 228                | 702                   | 775           | 300                | 440AA | C | C | B |
|      | * 225/65R17 | 102H  | -  | 6½J           | 228                | 724                   | 850           | 300                | 440AA | C | C | B |
|      | * 225/70R17 | 108T  | XL | 6½J           | 228                | 748                   | 1000          | 340                | 440AA | B | C | B |
|      | * 235/60R17 | 102H  | -  | 7J            | 240                | 714                   | 850           | 300                | 440AA | C | C | B |
|      | * 235/65R17 | 108H  | XL | 7J            | 240                | 738                   | 1000          | 340                | 440AA | B | C | B |
|      | * 245/65R17 | 107H  | -  | 7J            | 248                | 750                   | 975           | 300                | 440AA | B | C | B |
|      | * 245/70R17 | 108T  | -  | 7J            | 248                | 776                   | 1000          | 300                | 440AA | B | C | B |
|      | * 255/65R17 | 110H  | -  | 7½J           | 260                | 764                   | 1060          | 300                | 440AA | B | C | B |
| 18   | * 265/65R17 | 112H  | -  | 8J            | 272                | 776                   | 1120          | 300                | 440AA | B | C | B |
|      | * 265/70R17 | 113H  | -  | 8J            | 272                | 804                   | 1150          | 300                | 440AA | B | C | B |
|      | * 225/60R18 | 100H  | -  | 6½J           | 228                | 727                   | 800           | 300                | 440AA | C | C | B |
|      | * 235/60R18 | 103H  | -  | 7J            | 240                | 739                   | 875           | 300                | 440AA | C | C | B |
|      | * 235/65R18 | 110V  | XL | 7J            | 240                | 763                   | 1060          | 340                | 440AA | B | C | B |
|      | * 245/60R18 | 104H  | -  | 7J            | 248                | 751                   | 900           | 300                | 440AA | C | C | B |
|      | * 255/70R18 | 112H  | -  | 7½J           | 260                | 815                   | 1120          | 300                | 440AA | B | C | B |
|      | * 265/60R18 | 110H  | -  | 8J            | 272                | 775                   | 1060          | 300                | 440AA | B | C | B |
|      | * 265/65R18 | 114H  | -  | 8J            | 272                | 8010                  | 1180          | 300                | 440AA | B | C | B |
|      | * 275/65R18 | 116H  | -  | 8J            | 279                | 815                   | 1250          | 300                | 440AA | B | C | B |
| 20   | * 285/60R18 | 120H  | XL | 8½J           | 292                | 799                   | 1400          | 340                | 440AA | B | C | B |
|      | * 275/60R20 | 115H  | -  | 8J            | 279                | 838                   | 1215          | 300                | 440AA | B | C | B |

\* Coming soon



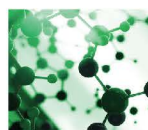
**shaped noise reduction groove design**  
pattern are in a "Z" shape, which can effectively disrupt the airflow, block the spread of noise and reduce vibration.



**Virtual analysis technology**  
The tread pattern pitch is optimized through virtual analysis technology, which effectively suppresses the resonance caused by the collision between the tread block and the road surface, thereby reducing noise and improving comfort.



**High-strength carcass/high-load bearing steel wire**  
cord structure is adopted to improve the carcass strength, increase the safety factor, and make the tire more impact-resistant.  
High-load bearing steel belt layer improves the tire's puncture resistance and makes the tire more durable.



**Wear-resistant tread compound**  
The new tread rubber formula enhances the tightness of the bonding between the filling molecules, making the tire tough and wear-resistant.



**Optimized contour and uniform force**  
The optimized tread profile makes the force more even, avoids uneven wear and prolongs the service life.



# SOLITUDE



### Continuous pattern rib design

The central pattern adopts continuous rib with 3D zigzag groove design, the tire is more stable at high speed and has excellent straight-line driving stability.



### Geometric chamfering and stepped transverse groove design

The stepped lateral groove design not only ensures the wet grip of the tire, but also improves the rigidity of the pattern block, improving the handling and dry braking performance. With the 3D three-dimensional trimming design, the rigidity of the block is further improved and the initial abnormal wear of the tire is suppressed.



### Semi-closed shoulder design

The semi-closed shoulder design can effectively block the transmission of noise from the central block, reduce the generation of tire noise, and bring excellent driving comfort. The rigidity of the shoulder part is improved, and the cornering performance of the tire is better.



### Shoulder groove design chamfered design

There is a 3D groove design at the connecting position between the shoulder and the sidewall. The design elements with HT characteristics reduce the air resistance and improve the heat dissipation performance of the tire at the shoulder position.



### Muffler Design

Four wide longitudinal grooves, 12 groups of "silencers" are evenly distributed throughout the circumference to break the sound waves generated by the longitudinal grooves and reduce noise.

M+S



Comfort



High performance



Symmetrical pattern

# SOLITUDE

| INCH | Size       | LI/SS | XL | Measuring Rim | Section Width (mm) | Overall Diameter (mm) | Max.Load (kg) | Max.Pressure (KPA) | UTQG  |   |   |   |
|------|------------|-------|----|---------------|--------------------|-----------------------|---------------|--------------------|-------|---|---|---|
| 16   | 215/65R16  | 102H  | XL | 6½J           | 221                | 686                   | 1874          | 340                | 420AA | C | C | B |
|      | 215/60R17  | 96H   | -  | 6½J           | 221                | 690                   | 1565          | 300                | 420AA | C | C | B |
|      | 215/65R17  | 99V   | -  | 6½J           | 221                | 712                   | 1709          | 300                | 420AA | C | C | B |
| 17   | 225/60R17  | 99H   | -  | 6½J           | 228                | 702                   | 1709          | 300                | 420AA | C | C | B |
|      | 225/65R17  | 102H  | -  | 6½J           | 228                | 724                   | 1874          | 300                | 420AA | C | C | B |
|      | 235/65R17  | 104H  | -  | 7J            | 240                | 738                   | 1984          | 300                | 420AA | C | C | B |
| 18   | 215/55R18  | 99V   | XL | 7J            | 226                | 693                   | 1709          | 340                | 420AA | C | C | B |
|      | 225/50R18  | 99V   | XL | 7J            | 233                | 683                   | 1709          | 340                | 420AA | C | C | B |
|      | 225/60R18  | 100H  | -  | 6½J           | 228                | 727                   | 1764          | 300                | 420AA | C | C | B |
|      | 235/50ZR18 | 101W  | XL | 7½J           | 245                | 693                   | 1819          | 340                | 420AA | C | C | B |
|      | 235/55R18  | 100H  | -  | 7½J           | 245                | 715                   | 1764          | 300                | 420AA | C | C | B |
| 19   | 235/60R18  | 103H  | -  | 7J            | 240                | 739                   | 1929          | 300                | 420AA | C | C | B |
|      | 235/65R18  | 106H  | -  | 7J            | 240                | 763                   | 2094          | 300                | 420AA | C | C | B |
|      | 245/50ZR18 | 100W  | -  | 7½J           | 253                | 703                   | 1764          | 300                | 420AA | C | C | B |
|      | 245/60R18  | 105V  | -  | 7J            | 248                | 751                   | 2039          | 300                | 420AA | C | C | B |
|      | 255/55R18  | 109V  | XL | 8J            | 265                | 737                   | 2271          | 340                | 420AA | B | C | B |
|      | 245/55ZR19 | 103W  | -  | 7½J           | 253                | 753                   | 1929          | 300                | 420AA | C | C | B |
| 20   | 255/50ZR19 | 107W  | XL | 8J            | 265                | 739                   | 2149          | 340                | 420AA | C | C | B |
|      | 235/45ZR20 | 100W  | XL | 8J            | 236                | 720                   | 1764          | 340                | 420AA | C | C | B |
|      | 235/55R20  | 105V  | XL | 7½J           | 245                | 766                   | 2039          | 340                | 420AA | B | C | B |
| 20   | 245/45ZR20 | 99W   | -  | 8J            | 243                | 728                   | 1709          | 300                | 420AA | C | C | B |
|      | 255/45ZR20 | 105W  | XL | 8½J           | 255                | 738                   | 2039          | 340                | 420AA | C | C | B |
|      | 255/55R20  | 110V  | XL | 8J            | 265                | 788                   | 2337          | 340                | 420AA | B | C | B |

 **TERCELO**  
Rolling Forward



AT



# WZR505



### Two wide drainage channels

Can quickly and effectively drain water, prevent tire slippage, and ensure the safety of wet driving.



### 3d chamfer design

The application of multiple three-dimensional chamfering designs increases the rigidity of the pattern blocks and effectively avoids abnormal early wear of the tires.



### Large block and stiffener design

The wide main pattern block and shoulder pattern block, combined with the design of multiple reinforcing ribs, endow the pattern block with sufficient rigidity, ensure control, and provide you with better off-road performance.



### Special multi-steel design

While ensuring the rigidity of the pattern block, it improves the wet grip and ensures the safety performance in the wet.



### Unique structure and formulation design

Reinforced tread and sidewall structure can withstand the impact of harsh and complex road surfaces on tires, specially optimized tread formula, improve tire wear, tear resistance, and prolong tire service life.

M+S



Professional off-road experience



Super high performance



Symmetric tread pattern

# WZR505

| INCH | Size      | LI/SS | XL | Measuring Rim | Section Width (mm) | Overall Diameter (mm) | Max.Load (kg) | Max.Pressure (KPA) | UTQG  |   |   |   |
|------|-----------|-------|----|---------------|--------------------|-----------------------|---------------|--------------------|-------|---|---|---|
| 16   | 215/70R16 | 99T   | -  | 6½J           | 221                | 708                   | 775           | 300                | 480AB | D | D | B |
|      | 225/70R16 | 101T  | -  | 6½J           | 228                | 722                   | 825           | 300                | 480AB | D | D | B |
|      | 235/70R16 | 104T  | -  | 7J            | 240                | 736                   | 900           | 300                | 480AB | D | D | B |
|      | 245/70R16 | 111T  | XL | 7J            | 248                | 750                   | 1090          | 340                | 480AB | D | D | B |
|      | 255/70R16 | 109T  | -  | 7½J           | 260                | 764                   | 1030          | 300                | 480AB | D | D | B |
|      | 265/70R16 | 111T  | -  | 8J            | 272                | 778                   | 1090          | 300                | 480AB | D | D | B |
| 17   | 265/65R17 | 112T  | -  | 8J            | 272                | 776                   | 1120          | 300                | 480AB | D | D | B |
|      | 265/70R17 | 113T  | -  | 8J            | 272                | 804                   | 1150          | 300                | 480AB | D | D | B |
|      | 275/65R17 | 115T  | -  | 8J            | 279                | 790                   | 1215          | 300                | 480AB | D | D | B |
| 18   | 265/60R18 | 110T  | -  | 8J            | 272                | 775                   | 1060          | 300                | 480AB | D | D | B |

| INCH | Size          | LI/SS    | PR   | Measuring Rim | Section Width (mm) | Overall Diameter (mm) | Max.Load (kg) | Max.Pressure (KPA) | UTQG  |   |   |   |
|------|---------------|----------|------|---------------|--------------------|-----------------------|---------------|--------------------|-------|---|---|---|
| 15   | LT215/75R15   | 106/103S | 8PR  | 6J            | 216                | 709                   | 950           | 450                | -     | D | C | B |
|      | LT225/75R15   | 108/104S | 8PR  | 6J            | 223                | 725                   | 1000          | 450                | -     | D | C | B |
|      | LT235/75R15   | 110/107S | 8PR  | 6½J           | 235                | 739                   | 1060          | 450                | -     | D | C | B |
|      | LT235/75R15   | 116/113S | 10PR | 6½J           | 235                | 739                   | 1250          | 550                | -     | D | C | B |
|      | LT255/70R15   | 113/110S | 8PR  | 7½J           | 260                | 745                   | 1150          | 450                | -     | D | C | B |
|      | 31×10.50R15LT | 109S     | 6PR  | 8½J           | 268                | 781                   | 1030          | 350                | 480AB | D | C | B |
| 16   | LT215/85R16   | 115/112S | 10PR | 6J            | 216                | 778                   | 1215          | 550                | -     | D | C | B |
|      | LT225/75R16   | 115/112S | 10PR | 6J            | 223                | 750                   | 1215          | 550                | -     | D | C | B |
|      | LT235/85R16   | 120/116S | 10PR | 6½J           | 235                | 812                   | 1380          | 550                | -     | D | C | B |
|      | LT245/75R16   | 120/116S | 10PR | 7J            | 248                | 780                   | 1380          | 550                | -     | D | C | B |
|      | LT265/70R16   | 121/118R | 10PR | 8J            | 272                | 784                   | 1450          | 550                | -     | D | C | B |
|      | LT265/75R16   | 123/120S | 10PR | 7½J           | 267                | 810                   | 1550          | 550                | -     | D | C | B |
| 17   | LT285/75R16   | 126/123R | 10PR | 8J            | 286                | 840                   | 1700          | 550                | -     | D | C | B |
|      | LT245/75R17   | 121/118S | 10PR | 7J            | 248                | 806                   | 1450          | 550                | -     | D | C | B |
|      | LT265/70R17   | 121/118S | 10PR | 8J            | 272                | 810                   | 1450          | 550                | -     | D | C | B |
|      | LT285/70R17   | 121/118S | 10PR | 8½J           | 292                | 838                   | 1450          | 550                | -     | D | C | B |
|      | LT305/70R17   | 121/118R | 10PR | 9J            | 311                | 860                   | 1450          | 450                | -     | D | C | B |
|      | LT315/70R17   | 121/118R | 10PR | 9½J           | 323                | 880                   | 1450          | 450                | -     | D | C | B |
| 18   | LT275/65R18   | 123/120S | 10PR | 8J            | 279                | 821                   | 1550          | 550                | -     | D | C | B |



# TERBLEND TAO 1



### Special zigzag pattern design

The large zigzag pattern design can cope with roads and various complex non-paved roads; There are wide grooves between the patterns to provide better mud, sand, and stone trapping performance; Serrated shoulder blocks for better traction on softer surfaces.



### Stepped shoulder shape design and eagle claw sidewall design

The shoulder pattern is dislocated to provide additional grip, enhance the traction ability when driving in complex road conditions such as mud, rocks and snow, and maintain good performance even in low air pressure conditions; The eagle claw sidewall design extending from the tire shoulder, the claw tip shape has a large arc, creating the effect of the claws grasping the tire, 3mm thicker than the sidewall, and protecting the sidewall from impacts and cuts.



### Self-cleaning design

Self-cleaning mud strip design, adding stone and mud discharge structures at the bottom of the pattern groove, timely remove the stones mixed in the pattern groove, improve the self-cleaning performance of muddy road conditions, and ensure the traction of the tire.



### High Density Sipe Design

A large number of sipes endow the tread with reasonable rigidity, increase the grip, effectively break the water film, and improve the safety performance of driving in rain and snow; The sipe, combined with the 3D trimming design, continues to improve the tire's wet grip performance while preventing early abnormal wear.

M+S



Professional off-road experience



Super high performance



Symmetric tread pattern

## TERBLEND TAO 1

| INCH | Size                    | LI/SS    | PR   | Measuring Rim | Section Width (mm) | Overall Diameter (mm) | Max.Load (kg) | Max.Pressure (KPA) | UTQG  |
|------|-------------------------|----------|------|---------------|--------------------|-----------------------|---------------|--------------------|-------|
| 15   | LT215/75R15 <b>OWL</b>  | 106/103S | 8PR  | 6J            | 216                | 703                   | 950           | 450                | -     |
|      | LT215/75R15 <b>BSW</b>  | 106/103S | 8PR  | 6J            | 216                | 703                   | 950           | 450                | -     |
| 16   | LT235/70R16 <b>OWL</b>  | 110/107Q | 8PR  | 7J            | 240                | 736                   | 1060          | 450                | -     |
|      | LT235/70R16 <b>BSW</b>  | 110/107Q | 8PR  | 7J            | 240                | 736                   | 1060          | 450                | -     |
|      | LT245/70R16 <b>OWL</b>  | 113/110S | 8PR  | 7J            | 248                | 750                   | 1150          | 450                | -     |
|      | LT245/70R16 <b>BSW</b>  | 113/110S | 8PR  | 7J            | 248                | 750                   | 1150          | 450                | -     |
| 17   | LT245/70R17 <b>OWL</b>  | 119/116S | 10PR | 7J            | 248                | 776                   | 1360          | 550                | -     |
|      | LT245/70R17 <b>BSW</b>  | 119/116S | 10PR | 7J            | 248                | 776                   | 1360          | 550                | -     |
|      | LT265/65R17 <b>OWL</b>  | 120/117Q | 10PR | 8J            | 272                | 776                   | 1400          | 550                | -     |
|      | LT265/65R17 <b>BSW</b>  | 120/117Q | 10PR | 8J            | 272                | 776                   | 1400          | 550                | -     |
|      | LT285/70R17 <b>OWL</b>  | 126/123S | 10PR | 8½J           | 292                | 832                   | 1700          | 550                | -     |
|      | LT285/70R17 <b>BSW</b>  | 126/123S | 10PR | 8½J           | 292                | 832                   | 1700          | 550                | -     |
|      | LT255/60R18 <b>OWL</b>  | 112/109S | 8PR  | 7½J           | 260                | 763                   | 1120          | 450                | -     |
|      | LT255/60R18 <b>BSW</b>  | 112/109S | 8PR  | 7½J           | 260                | 763                   | 1120          | 450                | -     |
| 18   | LT265/60R18 <b>OWL</b>  | 119/116S | 10PR | 8J            | 272                | 775                   | 1360          | 550                | -     |
|      | LT265/60R18 <b>BSW</b>  | 119/116S | 10PR | 8J            | 272                | 775                   | 1360          | 550                | -     |
|      | LT265/65R18 <b>OWL</b>  | 122/119S | 10PR | 8J            | 272                | 801                   | 1500          | 550                | -     |
|      | LT265/65R18 <b>BSW</b>  | 122/119S | 10PR | 8J            | 272                | 801                   | 1500          | 550                | -     |
|      | LT285/60R18 <b>OWL</b>  | 118/115S | 8PR  | 8½J           | 292                | 799                   | 1320          | 450                | -     |
|      | LT285/60R18 <b>BSW</b>  | 118/115S | 8PR  | 8½J           | 292                | 799                   | 1320          | 450                | -     |
| 19   | 265/55R19 <b>OWL</b>    | 113T     | XL   | 8½J           | 277                | 775                   | 1150          | 340                | 440AB |
|      | 265/55R19 <b>BSW</b>    | 113T     | XL   | 8½J           | 277                | 775                   | 1150          | 340                | 440AB |
| 20   | *LT275/55R20 <b>OWL</b> | 120/117S | 10PR | 9J            | 822                | 297                   | 1500          | 550                | -     |
|      | *LT275/55R20 <b>BSW</b> | 120/117S | 10PR | 9J            | 822                | 297                   | 1500          | 550                | -     |

\* Coming soon



# TERBLEND TA02

M+S



Professional off-road experience



Super high performance



Symmetric tread pattern

# TERBLEND TA02

| INCH | Size      | LI/SS | XL | Measuring Rim | Section Width (mm) | Overall Diameter (mm) | Max.Load (kg) | Max.Pressure (KPA) | UTQG  |   |   |   |
|------|-----------|-------|----|---------------|--------------------|-----------------------|---------------|--------------------|-------|---|---|---|
| 19   | 265/55R19 | 109V  | -  | 8½J           | 277                | 775                   | 2271          | 300                | 420AA | D | C | B |
| 20   | 265/55R20 | 113V  | XL | 8½J           | 277                | 800                   | 2535          | 340                | 420AA | D | C | B |



### Zigzag groove Design

The meandering longitudinal groove design can disturb the airflow during driving, reduce tire noise, and improve tire grip performance.



### One-piece tread block Design

The middle pattern block is designed with steel sheet and shallow groove to ensure the integration of the middle pattern block and improve the high-speed driving performance.



### Various forms of step Design

Various forms of stepped design enhance the self-cleaning function of the tire and improve the muddy and noise performance of the tire.



### Low noise design

The shoulder adopts a semi-closed design and is equipped with arc-shaped ribs to ensure the rigidity of the shoulder pattern block and reduce the lateral pump noise.

 **TERCELO**  
Rolling Forward



X T A R T



# TerceVita TX0 1

M+S



Professional off-road experience



Super high performance



Symmetric tread pattern

## TerceVita TX0 1

| INCH | Size          | LI/SS    | PR   | Measuring Rim | Section Width (mm) | Overall Diameter (mm) | Max.Load (kg) | Max.Pressure (KPA) |
|------|---------------|----------|------|---------------|--------------------|-----------------------|---------------|--------------------|
| 18   | 33×12.50R18LT | 122Q     | 12PR | 10J           | 318                | 826                   | 1500          | 550                |
|      | 35×12.50R18LT | 128Q     | 12PR | 10J           | 318                | 877                   | 1800          | 550                |
|      | LT275/55R20   | 120/117Q | 10PR | 8.5J          | 284                | 810                   | 1400          | 550                |
| 20   | 33×12.50R20LT | 119Q     | 12PR | 10J           | 318                | 826                   | 1360          | 550                |
|      | 35×12.50R20LT | 125Q     | 12PR | 10J           | 318                | 877                   | 1650          | 550                |
|      | 37×13.50R20LT | 128Q     | 12PR | 11J           | 345                | 928                   | 1800          | 550                |
|      | 33×12.50R22LT | 114Q     | 12PR | 10J           | 318                | 826                   | 1180          | 550                |
| 22   | 35×12.50R22LT | 121Q     | 12PR | 10J           | 318                | 877                   | 1450          | 550                |
|      | 37×13.50R22LT | 128Q     | 12PR | 11J           | 345                | 928                   | 1800          | 550                |



### Best wear resistance

All steel radial tire provides the best wear resistance, higher load capacity and better comfortable performance.



### Wide blocks tread pattern

Wide blocks tread pattern, tear resistance and impact resistance triple-polymer compound provide outstanding grip on/off road.



### Strong sidewall pattern blocks

Strong sidewall pattern blocks protect tires well on all bad road conditions.



### Mountain-shape protection armor

Mountain-shape protection armor tire edge not only provides sufficient protection, but also brings more joy and various-scenario experiences.





# TERCEMAXI TR01

M+S



Professional off-road experience



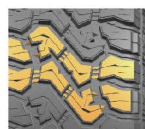
Super high performance



Symmetric tread pattern

## TERCEMAXI TR01

| INCH | Size                   | PR   | LI/SS    | Measuring Rim | Section Width (mm) | Overall Diameter (mm) | Max.Load (kg) | Max.Pressure (KPA) |
|------|------------------------|------|----------|---------------|--------------------|-----------------------|---------------|--------------------|
| 16   | LT235/70R16 <b>OWL</b> | 8PR  | 110/107Q | 7J            | 240                | 736                   | 2335          | 450                |
|      | LT235/70R16 <b>BSW</b> | 8PR  | 110/107Q | 7J            | 240                | 736                   | 2335          | 450                |
|      | LT255/70R16 <b>OWL</b> | 10PR | 120/117S | 7½J           | 260                | 764                   | 3085          | 550                |
|      | LT255/70R16 <b>BSW</b> | 10PR | 120/117S | 7½J           | 260                | 764                   | 3085          | 550                |
|      | LT265/70R16 <b>OWL</b> | 10PR | 121/118R | 8J            | 272                | 778                   | 3195          | 550                |
|      | LT265/70R16 <b>BSW</b> | 10PR | 121/118R | 8J            | 272                | 778                   | 3195          | 550                |
| 17   | LT265/65R17 <b>OWL</b> | 10PR | 120/117Q | 8J            | 272                | 776                   | 3085          | 550                |
|      | LT265/65R17 <b>BSW</b> | 10PR | 120/117Q | 8J            | 272                | 776                   | 3085          | 550                |
|      | LT265/70R17 <b>OWL</b> | 10PR | 121/118S | 8J            | 272                | 804                   | 3195          | 550                |
|      | LT265/70R17 <b>BSW</b> | 10PR | 121/118S | 8J            | 272                | 804                   | 3195          | 550                |
| 18   | LT315/70R17 <b>OWL</b> | 10PR | 121/118Q | 9½J           | 323                | 874                   | 3195          | 450                |
|      | LT315/70R17 <b>BSW</b> | 10PR | 121/118Q | 9½J           | 323                | 874                   | 3195          | 450                |
|      | LT265/60R18 <b>OWL</b> | 10PR | 119/116S | 8J            | 272                | 775                   | 3000          | 550                |
|      | LT265/60R18 <b>BSW</b> | 10PR | 119/116S | 8J            | 272                | 775                   | 3000          | 550                |



### Two-in-one interlocking pattern design

Wide pattern blocks provide stronger performance for driving on bad roads; The two central patterns and the shoulder blocks are combined to form an eagle claw pattern, which enhances the aesthetics of the pattern, is more holistic, and takes into account both off-road performance and road performance; The shoulder blocks are relatively wide, which improves the steering stability of the tire when turning;



### Block edge step design

The edge of the tread block is designed with steps, which can increase the grip during acceleration and braking, improve the grip performance of all road conditions, and at the same time, it can also restrain the abnormal wear of the tire in the early stage.



### Stepped Shoulder Shape and Eagle Claw Sidewall Design

The shoulder pattern is uneven, which can provide stable grip during steering and bad road conditions, and still provide strong traction performance even on muddy and gravel roads; Eagle claw sidewall design, the shape of the claw tip has a large arc, creating the effect of claws gripping the tire, while protecting the sidewall from impacts and cuts, providing extra grip when the tire is out of air, ensuring that in harsh conditions Drive safely in road conditions.



### Self-cleaning design

A mud strip is designed at the bottom of the tread groove pattern, which can remove the stones and sediment mixed in the pattern transverse groove in time, improve the self-cleaning performance of muddy road conditions, and ensure the grip of the pattern.



MIT



# Toughevo TMO 1



**Wide grounding design**  
Wide grounding design improves ground adhesion



**Excellent drive and passability**  
Strong and staggered lateral shoulder blocks for excellent drive and passability



**High-strength pattern block design**  
High-strength pattern block design, strong rigidity, not easy to deform, and improve bearing capacity



**High-strength carcass structure**  
High-strength carcass structure, combined with strong rim guards, make driving more controllable

M+S



Professional off-road experience



Super high performance



Symmetric tread pattern

## Toughevo TMO 1

| INCH | Size          | LI/SS    | PR   | Measuring Rim | Section Width (mm) | Overall Diameter (mm) | Max.Load (kg) | Max.Pressure (KPA) |
|------|---------------|----------|------|---------------|--------------------|-----------------------|---------------|--------------------|
| 15   | LT215/75R15   | 106/103Q | 8PR  | 6J            | 216                | 709                   | 2095          | 450                |
|      | LT235/75R15   | 110/107Q | 8PR  | 6½J           | 235                | 739                   | 2335          | 450                |
|      | 31×10.50R15LT | 109Q     | 6PR  | 8½J           | 268                | 775                   | 2270          | 350                |
| 16   | LT245/75R16   | 114/111Q | 8PR  | 7J            | 248                | 780                   | 2623          | 450                |
|      | LT265/75R16   | 123/120Q | 10PR | 7½J           | 267                | 804                   | 3415          | 550                |
|      | LT285/75R16   | 126/123Q | 10PR | 8J            | 286                | 834                   | 3750          | 550                |
| 17   | LT265/70R17   | 121/118Q | 10PR | 8J            | 272                | 810                   | 3195          | 550                |
|      | LT285/70R17   | 121/118Q | 10PR | 8½J           | 292                | 838                   | 3195          | 550                |
|      | LT285/75R17   | 121/118Q | 10PR | 8J            | 286                | 866                   | 3195          | 550                |
|      | LT295/70R17   | 121/118Q | 10PR | 8½J           | 299                | 852                   | 3195          | 550                |
|      | 33×12.50R17LT | 120Q     | 10PR | 10J           | 318                | 826                   | 3085          | 450                |
| 18   | LT275/65R18   | 123/120Q | 10PR | 8J            | 279                | 815                   | 3415          | 550                |
|      | LT285/70R18   | 127/124Q | 10PR | 8½J           | 292                | 857                   | 3860          | 550                |
|      | 33×12.50R18LT | 118Q     | 10PR | 10J           | 318                | 826                   | 2910          | 450                |
| 20   | LT285/55R20   | 122/119Q | 10PR | 9J            | 297                | 822                   | 3305          | 550                |
|      | 33×12.50R20LT | 114Q     | 10PR | 10J           | 318                | 826                   | 2600          | 450                |
|      | 35×12.50R20LT | 121Q     | 10PR | 10J           | 318                | 877                   | 3195          | 450                |



**WANN**



# WZT705



### Three wide drainage channels

There are three wide longitudinal drainage grooves on the crown to increase drainage performance and reduce the occurrence of water skidding, which can effectively reduce the wet braking distance and improve the driving safety of the tires.



### Multi-pitch pattern design

Multi-pitch pattern design and chaotic arrangement can effectively reduce vibration noise and bring more comfortable driving experience



### The crown has many small pattern horizontal grooves

The reasonable distribution of numerous small pattern transverse grooves on the tire crown can effectively reduce the rolling noise, and at the same time make the tire crown rigidity distribution more uniform, reduce abnormal wear and improve life.

M+S



Super Load-bearing



Longer Mileage



Anti-tearing

# WZT705

| INCH | Size         | L/SS     | PR   | Measuring Rim | Section Width (mm) | Overall Diameter (mm) | Max.Load (kg) | Max.Pressure (KPA) |   |   |   |
|------|--------------|----------|------|---------------|--------------------|-----------------------|---------------|--------------------|---|---|---|
| 13   | 155R13C      | 85/83S   | 6PR  | 4½J           | 157                | 578                   | 1135          | 350                | D | C | B |
|      | 165/70R13C   | 88/86T   | 6PR  | 5.00B         | 170                | 562                   | 1235          | 375                | D | C | B |
|      | 165R13C      | 94/93R   | 8PR  | 4.50B         | 167                | 596                   | 1475          | 450                | D | C | B |
|      | 175R13C      | 97/95S   | 8PR  | 5.00B         | 177                | 610                   | 1610          | 450                | D | C | B |
| 14   | 165R14C      | 96/95R   | 8PR  | 4½J           | 167                | 622                   | 1565          | 450                | D | C | B |
|      | 175/70R14C   | 95/93S   | 6PR  | 5J            | 177                | 602                   | 1520          | 375                | D | C | B |
|      | 175R14LT     | 99/98R   | 8PR  | 5J            | 177                | 636                   | 1710          | 450                | D | C | B |
|      | 185R14C      | 102/100Q | 8PR  | 5½J           | 188                | 650                   | 1875          | 450                | C | C | B |
|      | 195R14C      | 106/104Q | 8PR  | 5½J           | 198                | 666                   | 2095          | 450                | C | C | B |
|      | 205R14C      | 109/107S | 8PR  | 6J            | 208                | 686                   | 2270          | 450                | C | C | B |
| 15   | 185R15C      | 103/102R | 8PR  | 5½J           | 188                | 674                   | 1930          | 450                | C | C | B |
|      | 195/70R15C   | 104/102R | 8PR  | 6J            | 201                | 655                   | 1985          | 450                | C | C | B |
|      | 195R15C      | 106/104Q | 8PR  | 5½J           | 196                | 693                   | 2095          | 450                | C | C | B |
|      | 205/70R15C   | 106/104R | 8PR  | 6J            | 209                | 669                   | 2095          | 450                | C | C | B |
|      | 215/65R15C   | 104/102T | 6PR  | 6½J           | 221                | 661                   | 1985          | 375                | C | C | B |
|      | 215/70R15C   | 109/107S | 8PR  | 6½J           | 221                | 683                   | 2270          | 450                | C | C | B |
|      | 225/70R15C   | 112/110S | 8PR  | 6½J           | 228                | 697                   | 2470          | 450                | C | C | B |
|      | 185/75R16C   | 104/102R | 8PR  | 5J            | 184                | 684                   | 1985          | 475                | C | C | B |
| 16   | * 195/60R16C | 99/97T   | 6PR  | 6J            | 201                | 640                   | 1550          | 375                | C | C | B |
|      | 195/65R16C   | 104/102R | 8PR  | 6J            | 201                | 660                   | 1985          | 475                | C | C | B |
|      | 195/75R16C   | 107/105R | 8PR  | 5½J           | 196                | 698                   | 2150          | 475                | C | C | B |
|      | 205/65R16C   | 107/105T | 8PR  | 6J            | 209                | 672                   | 2150          | 475                | C | C | B |
|      | * 205/75R16C | 113/111R | 10PR | 5½J           | 203                | 714                   | 2300          | 525                | C | C | B |
|      | * 215/60R16C | 108/106T | 8PR  | 6½J           | 221                | 664                   | 2000          | 375                | C | C | B |
|      | 215/65R16C   | 109/107T | 8PR  | 6½J           | 221                | 686                   | 2270          | 475                | C | C | B |
|      | 215/75R16C   | 116/114R | 10PR | 6J            | 216                | 728                   | 2755          | 525                | C | C | B |
|      | 225/65R16C   | 112/110R | 8PR  | 6½J           | 228                | 698                   | 2470          | 475                | C | C | B |
|      | 235/65R16C   | 115/113R | 8PR  | 7J            | 240                | 712                   | 2680          | 475                | C | C | B |
| 17   | * 215/60R17C | 109/107T | 8PR  | 6½J           | 221                | 690                   | 2060          | 475                | C | C | B |

\* Coming soon



# Terceload TC02

M+S



Super Load-bearing



Longer Mileage



Anti-tearing

## Terceload TC02

| INCH | Size       | LI/SS    | PR  | Measuring Rim | Section Width (mm) | Overall Diameter (mm) | Max.Load (kg) | Max.Pressure (KPA) |   |   |   |
|------|------------|----------|-----|---------------|--------------------|-----------------------|---------------|--------------------|---|---|---|
| 16   | 185/75R16C | 104/102R | 8PR | 5J            | 184                | 684                   | 1985          | 475                | C | C | B |
|      | 195/75R16C | 107/105R | 8PR | 5½J           | 196                | 698                   | 2150          | 475                | C | C | B |



### Four wide drainage grooves design

Four wide longitudinal drainage ditches provide excellent drainage performance, reduce the occurrence of water slippage, and effectively reduce the wet braking distance



### Mesh grooves design

Multi-horizontal grooves and zigzag longitudinal grooves are interwoven into mesh grooves, with small zigzag grooves to increase the traction capacity of the tire



### Optimize the tire contact surface technology

Optimize the tire contact surface technology, optimize the position and width of the grooves, and ensure the tire contact area and stability



# Terceload TC03

M+S



Super Load-bearing



Longer Mileage



Anti-tearing

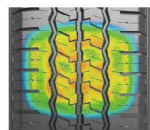
## Terceload TC03

| INCH | Size       | LI/SS    | PR  | Measuring Rim | Section Width (mm) | Overall Diameter (mm) | Max.Load (kg) | Max.Pressure (KPA) |
|------|------------|----------|-----|---------------|--------------------|-----------------------|---------------|--------------------|
| 14   | 215/75R14C | 112/110S | 8PR | 6J            | 225                | 678                   | 2470          | 475                |



### Stronger load bearing

The optimized structure design and the use of finite element assisted analysis make the stress situation of each part of the tire more reasonable



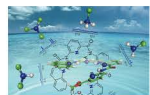
### Better wear resistance

The optimized contour design makes the tread ground area larger and the pressure more uniform, thus making the tire wear resistance more excellent



### Excellent tear resistance

Integrated shoulder with Mosaic pattern block design, so that the pattern block is attached to each other, the ability to resist external impact is stronger



### Formula

The use of the latest generation of modified dissolved polybutadiene makes rubber molecules and fillers have better affinity, improve toughness, enhance tear resistance, and meet the needs of harsh road conditions



*Spring*

*Summer*

*Autumn*

*Winter*

ALL  
SEASON



# CROSEASON 4S



M+S



Comfort



High performance



Symmetric tread pattern



All-weather support

## CROSEASON 4S

| INCH | Size      | LI/SS | XL | Measuring Rim | Section Width (mm) | Overall Diameter (mm) | Max.Load (kg) | Max.Pressure (KPA) | UTQG  |   |   |   |
|------|-----------|-------|----|---------------|--------------------|-----------------------|---------------|--------------------|-------|---|---|---|
| 13   | 155/65R13 | 73T   | -  | 4.50B         | 157                | 532                   | 805           | 300                | 420AA | C | C | B |
|      | 155/80R13 | 79T   | -  | 4½J           | 157                | 578                   | 963           | 300                | 420AA | C | C | B |
|      | 165/70R13 | 79T   | -  | 5J            | 170                | 562                   | 963           | 300                | 420AA | C | C | B |
|      | 175/70R13 | 82T   | -  | 5J            | 177                | 576                   | 1047          | 300                | 420AA | C | C | B |
|      | 185/70R13 | 86T   | -  | 5½J           | 189                | 590                   | 1168          | 300                | 420AA | C | C | B |
| 14   | 155/65R14 | 75T   | -  | 4½J           | 157                | 558                   | 853           | 300                | 420AA | C | C | B |
|      | 165/65R14 | 79T   | -  | 5J            | 170                | 570                   | 963           | 300                | 420AA | C | C | B |
|      | 165/70R14 | 81T   | -  | 5J            | 170                | 588                   | 1019          | 300                | 420AA | C | C | B |
|      | 175/65R14 | 82T   | -  | 5J            | 177                | 584                   | 1047          | 300                | 420AA | C | C | B |
|      | 185/65R14 | 86H   | -  | 5½J           | 189                | 596                   | 1168          | 300                | 420AA | C | C | B |
| 15   | 185/70R14 | 88T   | -  | 5½J           | 189                | 616                   | 1235          | 300                | 420AA | C | C | B |
|      | 205/70R14 | 94T   | -  | 6J            | 209                | 644                   | 1477          | 300                | 420AA | C | C | B |
|      | 165/65R15 | 81H   | -  | 5J            | 170                | 595                   | 1019          | 300                | 420AA | C | C | B |
|      | 175/65R15 | 84H   | -  | 5J            | 177                | 609                   | 1102          | 300                | 420AA | C | C | B |
|      | 185/55R15 | 82H   | -  | 6J            | 194                | 585                   | 1047          | 300                | 420AA | C | C | B |
| 15   | 185/60R15 | 88H   | XL | 5½J           | 189                | 603                   | 1235          | 340                | 420AA | C | C | B |
|      | 185/65R15 | 88H   | -  | 5½J           | 189                | 621                   | 1235          | 300                | 420AA | C | C | B |
|      | 195/50R15 | 82V   | -  | 6J            | 201                | 577                   | 1047          | 300                | 420AA | C | C | B |
|      | 195/55R15 | 85V   | -  | 6J            | 201                | 595                   | 1135          | 300                | 420AA | C | C | B |
|      | 195/60R15 | 88V   | -  | 6J            | 201                | 615                   | 1235          | 300                | 420AA | C | C | B |
| 15   | 195/65R15 | 91H   | -  | 6J            | 201                | 635                   | 1356          | 300                | 420AA | C | C | B |
|      | 205/65R15 | 94V   | -  | 6J            | 209                | 647                   | 1477          | 300                | 420AA | C | C | B |
|      | 215/65R15 | 96H   | -  | 6½J           | 221                | 661                   | 1565          | 300                | 420AA | C | C | B |



### Low noise design

"Herringbone" single-guided pattern, horizontal main groove and pattern block vertical design, reduce tire running noise and improve driving comfort.



### Snow performance design

The widened transverse groove design increases the edge effect of the pattern block, and optimizes the angle of the middle pattern block steel sheet to improve snow and wet performance



### 3D steel sheet design




¼ pattern block steel sheet and shoulder pattern block steel sheet are in the form of 3D steel sheets to enhance the overall rigidity of the pattern block and improve driving performance in all seasons






### High rigidity design

The multi-form step-type rib design ensures the connecting effect of the pattern blocks, improves the overall rigidity of the pattern blocks, and enhances the aesthetics of the tire

# CROSEASON 4S

| INCH       | Size       | LI/SS | XL  | Measuring Rim | Section Width (mm) | Overall Diameter (mm) | Max.Load (kg) | Max.Pressure (KPA) | UTQG  |  |  |  |
|------------|------------|-------|-----|---------------|--------------------|-----------------------|---------------|--------------------|-------|---|---|---|
| 16         | 195/45R16  | 84V   | XL  | 6½J           | 195                | 582                   | 1102          | 340                | 420AA | C   | C   | B   |
|            | 195/50R16  | 88V   | XL  | 6J            | 201                | 602                   | 1235          | 340                | 420AA | C   | C   | B   |
|            | 195/55R16  | 91V   | XL  | 6J            | 201                | 620                   | 1356          | 340                | 420AA | C   | C   | B   |
|            | 195/60R16  | 89V   | -   | 6J            | 201                | 640                   | 1279          | 300                | 420AA | C   | C   | B   |
|            | 205/45ZR16 | 87W   | XL  | 7J            | 206                | 590                   | 1201          | 340                | 420AA | C   | C   | B   |
|            | 205/50ZR16 | 91W   | XL  | 6½J           | 214                | 612                   | 1356          | 340                | 420AA | C   | C   | B   |
|            | 205/55R16  | 91V   | -   | 6½J           | 214                | 632                   | 1356          | 300                | 420AA | C   | C   | B   |
|            | 205/60R16  | 96V   | XL  | 6J            | 209                | 652                   | 1565          | 340                | 420AA | C   | C   | B   |
|            | 215/45R16  | 90V   | XL  | 7J            | 213                | 600                   | 1323          | 340                | 420AA | C   | B   | B   |
|            | 215/55ZR16 | 97W   | XL  | 7J            | 226                | 642                   | 1609          | 340                | 420AA | C   | B   | B   |
|            | 215/60R16  | 99V   | XL  | 6½J           | 221                | 664                   | 1709          | 340                | 420AA | C   | B   | B   |
|            | 215/65R16  | 98V   | -   | 6½J           | 221                | 686                   | 1653          | 300                | 420AA | C   | B   | B   |
|            | 215/70R16  | 100H  | -   | 6½J           | 221                | 708                   | 1764          | 300                | 420AA | C   | B   | B   |
|            | 225/55ZR16 | 99W   | XL  | 7J            | 233                | 654                   | 1709          | 340                | 420AA | C   | B   | B   |
|            | 225/60R16  | 102V  | XL  | 6½J           | 228                | 676                   | 1874          | 340                | 420AA | B   | B   | B   |
|            | 235/60R16  | 100V  | -   | 7J            | 240                | 688                   | 1764          | 300                | 420AA | C   | B   | B   |
| 17         | 205/40ZR17 | 84W   | XL  | 7½J           | 212                | 596                   | 1102          | 340                | 420AA | C   | C   | B   |
|            | 205/45ZR17 | 88W   | XL  | 7J            | 206                | 616                   | 1235          | 340                | 420AA | C   | C   | B   |
|            | 205/50ZR17 | 93W   | XL  | 6½J           | 214                | 638                   | 1433          | 340                | 420AA | C   | C   | B   |
|            | 205/55ZR17 | 95W   | XL  | 6½J           | 214                | 658                   | 1521          | 340                | 420AA | C   | C   | B   |
|            | 215/40ZR17 | 87W   | XL  | 7½J           | 218                | 604                   | 1201          | 340                | 420AA | C   | B   | B   |
|            | 215/45ZR17 | 91W   | XL  | 7J            | 213                | 626                   | 1356          | 340                | 420AA | C   | B   | B   |
|            | 215/50ZR17 | 95W   | XL  | 7J            | 226                | 648                   | 1521          | 340                | 420AA | C   | B   | B   |
|            | 215/55ZR17 | 98W   | XL  | 7J            | 226                | 668                   | 1653          | 340                | 420AA | C   | B   | B   |
|            | 215/60R17  | 100V  | XL  | 6½J           | 221                | 690                   | 1764          | 340                | 420AA | C   | B   | B   |
|            | 215/65R17  | 99V   | -   | 6½J           | 226                | 693                   | 1709          | 300                | 420AA | C   | B   | B   |
|            | 225/45ZR17 | 94Y   | XL  | 7½J           | 225                | 634                   | 1477          | 340                | 420AA | C   | B   | B   |
|            | 225/50ZR17 | 98Y   | XL  | 7J            | 233                | 658                   | 1653          | 340                | 420AA | C   | B   | B   |
|            | 225/55ZR17 | 101W  | XL  | 7J            | 233                | 680                   | 1819          | 340                | 420AA | C   | B   | B   |
|            | 225/60R17  | 103V  | XL  | 6½J           | 228                | 702                   | 1929          | 340                | 420AA | B   | B   | B   |
|            | 225/65R17  | 106V  | XL  | 6½J           | 228                | 724                   | 2094          | 340                | 420AA | B   | B   | B   |
|            | 235/45ZR17 | 97W   | XL  | 8J            | 236                | 644                   | 1609          | 340                | 420AA | C   | B   | B   |
| 235/55ZR17 | 103W       | XL    | 7½J | 245           | 690                | 1929                  | 340           | 420AA              | B     | B   | B   |   |
| 235/65R17  | 108V       | XL    | 7J  | 240           | 738                | 2205                  | 340           | 420AA              | B     | B   | B   |   |
| 245/45ZR17 | 99W        | XL    | 8J  | 243           | 652                | 1709                  | 340           | 420AA              | C     | B   | B   |   |

# CROSEASON 4S

| INCH       | Size       | LI/SS | XL  | Measuring Rim | Section Width (mm) | Overall Diameter (mm) | Max.Load (kg) | Max.Pressure (KPA) | UTQG  |  |  |  |
|------------|------------|-------|-----|---------------|--------------------|-----------------------|---------------|--------------------|-------|---|---|---|
| 18         | 215/50ZR18 | 92W   | -   | 7J            | 226                | 673                   | 1389          | 300                | 420AA | C   | B   | B   |
|            | 215/55R18  | 99V   | XL  | 7J            | 226                | 693                   | 1709          | 340                | 420AA | C   | B   | B   |
|            | 225/40ZR18 | 92Y   | XL  | 8J            | 230                | 637                   | 1389          | 340                | 420AA | C   | B   | B   |
|            | 225/45ZR18 | 95W   | XL  | 7½J           | 225                | 659                   | 1521          | 340                | 420AA | C   | B   | B   |
|            | 225/50ZR18 | 99W   | XL  | 7J            | 233                | 683                   | 1709          | 340                | 420AA | C   | B   | B   |
|            | 225/55R18  | 98V   | -   | 7J            | 233                | 705                   | 1653          | 300                | 420AA | C   | B   | B   |
|            | 235/45ZR18 | 98Y   | XL  | 8J            | 236                | 669                   | 1653          | 340                | 420AA | C   | B   | B   |
|            | 235/50ZR18 | 101W  | XL  | 7½J           | 245                | 693                   | 1819          | 340                | 420AA | C   | B   | B   |
|            | 235/55R18  | 104V  | XL  | 7½J           | 245                | 715                   | 1984          | 340                | 420AA | B   | B   | B   |
|            | 235/60R18  | 107V  | XL  | 7J            | 240                | 739                   | 2149          | 340                | 420AA | B   | B   | B   |
|            | 245/40ZR18 | 97Y   | XL  | 8½J           | 248                | 653                   | 1609          | 340                | 420AA | C   | B   | B   |
|            | 245/45ZR18 | 100Y  | XL  | 8J            | 243                | 677                   | 1764          | 340                | 420AA | C   | B   | B   |
|            | 255/40ZR18 | 95Y   | -   | 9J            | 260                | 661                   | 1521          | 300                | 420AA | C   | B   | B   |
|            | 205/55ZR19 | 97W   | XL  | 6½J           | 214                | 709                   | 1609          | 340                | 420AA | C   | C   | B   |
|            | 215/50ZR19 | 93W   | -   | 7J            | 226                | 699                   | 1433          | 300                | 420AA | C   | B   | B   |
|            | 225/35ZR19 | 88Y   | XL  | 8J            | 230                | 641                   | 1235          | 340                | 420AA | C   | B   | B   |
| 225/40ZR19 | 93Y        | XL    | 8J  | 230           | 663                | 1433                  | 340           | 420AA              | C     | B   | B   |   |
| 225/45ZR19 | 96Y        | XL    | 7½J | 225           | 685                | 1565                  | 340           | 420AA              | C     | B   | B   |   |
| 225/55ZR19 | 99W        | -     | 7J  | 233           | 731                | 1709                  | 300           | 420AA              | C     | B   | B   |   |
| 235/35ZR19 | 91Y        | XL    | 8½J | 241           | 647                | 1356                  | 340           | 420AA              | C     | B   | B   |   |
| 235/40ZR19 | 96Y        | XL    | 8½J | 241           | 671                | 1565                  | 340           | 420AA              | C     | B   | B   |   |
| 235/45ZR19 | 99Y        | XL    | 8J  | 236           | 695                | 1709                  | 340           | 420AA              | C     | B   | B   |   |
| 235/50ZR19 | 103W       | XL    | 7½J | 245           | 719                | 1929                  | 340           | 420AA              | B     | B   | B   |   |
| 235/55ZR19 | 105W       | XL    | 7½J | 245           | 741                | 2039                  | 340           | 420AA              | B     | B   | B   |   |
| 245/40ZR19 | 98Y        | XL    | 8½J | 248           | 679                | 1653                  | 340           | 420AA              | C     | B   | B   |   |
| 245/45ZR19 | 102Y       | XL    | 8J  | 243           | 703                | 1874                  | 340           | 420AA              | B     | B   | B   |   |
| 255/35ZR19 | 96Y        | XL    | 9J  | 260           | 661                | 1565                  | 340           | 420AA              | C     | B   | B   |   |
| 255/40ZR19 | 100Y       | XL    | 9J  | 260           | 687                | 1764                  | 340           | 420AA              | C     | B   | B   |   |
| 255/50ZR19 | 103W       | -     | 8J  | 265           | 739                | 1929                  | 300           | 420AA              | B     | B   | B   |   |
| 245/45ZR20 | 103Y       | XL    | 8J  | 243           | 728                | 1929                  | 340           | 420AA              | B     | B   | B   |   |
| 255/40ZR20 | 101Y       | XL    | 9J  | 260           | 712                | 1819                  | 340           | 420AA              | C     | B   | B   |   |
| 255/45ZR20 | 105W       | XL    | 8½J | 255           | 738                | 2039                  | 340           | 420AA              | B     | B   | B   |   |
| 275/40ZR20 | 106Y       | XL    | 9½J | 278           | 728                | 2094                  | 340           | 420AA              | B     | B   | B   |   |
| 235/45ZR21 | 101W       | XL    | 8J  | 236           | 745                | 1819                  | 340           | 420AA              | C     | B   | B   |   |
| 255/40ZR21 | 102Y       | XL    | 9J  | 260           | 737                | 1874                  | 340           | 420AA              | B     | B   | B   |   |



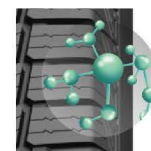
# CROSEASON VAN



**Higher applicability and economy**  
 With safety, economy of all season load performance  
 Excellent handling performance guarantees your driving  
 safety and enduring reliability



**3D steel sheet design**  
 The optimized tread block and groove design and  
 the use of 3D steel sheets give the tires excellent  
 snow performance and lower rolling resistance, and  
 the wide groove design of the tire shoulders can  
 better prevent side sliding



**The reinforced sidewall structure design**  
 Increased the overall rigidity of the tire and improves the  
 tire's load-bearing capacity

M+S



Comfort



High performance



Symmetric tread pattern



All-weather support

## CROSEASON VAN

| INCH | Size       | LI/SS    | Measuring Rim | Section Width (mm) | Overall Diameter (mm) | Max.Load (kg) | Max.Pressure (KPA) |   |   |   |
|------|------------|----------|---------------|--------------------|-----------------------|---------------|--------------------|---|---|---|
| 14   | 175/65R14C | 90/88T   | 5J            | 177                | 584                   | 1325          | 375                | D | B | B |
|      | 175/70R14C | 95/93T   | 5J            | 177                | 602                   | 1520          | 375                | C | B | B |
| 15   | 195/70R15C | 104/102S | 6J            | 201                | 655                   | 1985          | 450                | C | B | B |
|      | 205/70R15C | 106/104S | 6J            | 209                | 669                   | 2095          | 450                | C | B | B |
|      | 215/70R15C | 109/107S | 6½J           | 221                | 683                   | 2270          | 450                | C | B | B |
|      | 225/70R15C | 112/110S | 6½J           | 228                | 697                   | 2470          | 450                | C | B | B |
| 16   | 185/75R16C | 104/102S | 5J            | 201                | 684                   | 1985          | 475                | C | B | B |
|      | 195/60R16C | 99/97H   | 6J            | 221                | 640                   | 1710          | 375                | C | B | B |
|      | 195/65R16C | 104/102S | 6J            | 201                | 660                   | 1985          | 475                | C | B | B |
|      | 195/75R16C | 107/105S | 5½J           | 209                | 698                   | 2150          | 475                | C | B | B |
|      | 205/65R16C | 107/105T | 6J            | 221                | 672                   | 2150          | 475                | C | B | B |
|      | 205/75R16C | 113/111S | 5½J           | 228                | 714                   | 2535          | 525                | C | B | B |
|      | 215/60R16C | 103/101T | 6½J           | 240                | 664                   | 1930          | 375                | C | B | B |
|      | 215/65R16C | 109/107T | 6½J           | 184                | 686                   | 2270          | 475                | C | B | B |
|      | 215/75R16C | 113/111S | 6J            | 196                | 728                   | 2535          | 475                | C | B | B |
|      | 225/65R16C | 112/110S | 6½J           | 203                | 698                   | 2470          | 475                | C | B | B |
| 17   | 225/75R16C | 121/120R | 6J            | 216                | 750                   | 3195          | 575                | C | B | B |
|      | 235/65R16C | 115/113S | 7J            | 223                | 712                   | 2680          | 475                | C | B | B |
|      | 215/60R17C | 109/107T | 6½J           | 221                | 690                   | 2270          | 475                | C | B | B |



SNOW

# WINTER TYRES



The winter tyre is committed to solving the problem of travel safety in winter. Through pattern design and formula upgrade, the performance of ice and snow road is further improved to better protect the safety of drivers and passengers. This can also help people to overcome snow and ice road conditions in the cold winter and enjoy the fun of driving.

### Excellent handling performance

The use of 3D steel sheet technology improves tread strength and brings excellent handling performance.

### Superb braking performance

The dense array of tiny tyre grooves increases friction, prevents tyres from sliding and improves braking performance.

### Stable driving experience

The zigzag shape of the tyre pattern blocks can be chimed with the snow to ensure stable driving.



**FROST BITE TWO 1**



**ICE KNIGHT**



**FREEZE S 1**



**BLUE SNOW**



**ECOSNOW 4X4**









**FREEZE 4X4**



**WINTER DEFENDER**

| INCH | Pattern    | Size      | LI/SS | XL | Measuring Rim | Section Width (mm) | Overall Diameter (mm) | Max.Load (kg) | Max.Pressure (KPA) |   |   |   |
|------|------------|-----------|-------|----|---------------|--------------------|-----------------------|---------------|--------------------|---|---|---|
| 13   | FREEZE S1  | 155/65R13 | 73T   | -  | 4.50B         | 157                | 532                   | 365           | 300                | D | D | B |
|      | FREEZE S1  | 165/70R13 | 83T   | XL | 5.00B         | 170                | 562                   | 487           | 340                | D | D | B |
|      | ICE KNIGHT | 175/70R13 | 82T   | -  | 5J            | 177                | 576                   | 475           | 300                | D | E | B |
| 14   | ICE KNIGHT | 175/65R14 | 82T   | -  | 5J            | 177                | 584                   | 475           | 300                | D | E | B |
|      | FREEZE S1  | 175/70R14 | 88T   | XL | 5J            | 177                | 602                   | 560           | 340                | D | D | B |
|      | ICE KNIGHT | 185/60R14 | 82T   | -  | 5½J           | 189                | 578                   | 475           | 300                | D | D | B |
|      | ICE KNIGHT | 185/65R14 | 86T   | -  | 5½J           | 189                | 596                   | 530           | 300                | D | E | B |
|      | ICE KNIGHT | 185/70R14 | 88T   | -  | 5½J           | 189                | 616                   | 560           | 300                | D | E | B |
| 15   | FREEZE S1  | 185/60R15 | 88H   | XL | 5½J           | 189                | 603                   | 560           | 340                | D | D | B |
|      | ICE KNIGHT | 185/65R15 | 88T   | -  | 5½J           | 189                | 621                   | 560           | 300                | D | E | B |
|      | ICE KNIGHT | 195/55R15 | 85T   | -  | 6J            | 201                | 595                   | 515           | 300                | D | D | B |
|      | ICE KNIGHT | 195/60R15 | 88T   | -  | 6J            | 201                | 615                   | 560           | 300                | D | D | B |
|      | ICE KNIGHT | 195/65R15 | 91T   | -  | 6J            | 201                | 635                   | 615           | 300                | D | D | B |
|      | ICE KNIGHT | 205/65R15 | 94T   | -  | 6J            | 209                | 647                   | 670           | 300                | D | D | B |
|      | ICE KNIGHT | 205/70R15 | 96T   | -  | 6J            | 209                | 669                   | 710           | 300                | C | D | B |
|      | ECOSNOW4X4 | 215/75R15 | 100T  | -  | 6J            | 216                | 703                   | 800           | 300                | D | D | B |
|      | FREEZE S1  | 195/55R16 | 91H   | XL | 6J            | 201                | 620                   | 615           | 340                | D | D | B |
|      | ICE KNIGHT | 195/60R16 | 89T   | -  | 6J            | 201                | 640                   | 580           | 300                | D | D | B |
| 16   | FREEZE S1  | 205/55R16 | 94H   | XL | 6½J           | 214                | 632                   | 670           | 340                | D | D | B |
|      | ICE KNIGHT | 205/60R16 | 92T   | -  | 6J            | 209                | 652                   | 630           | 300                | D | D | B |
|      | ICE KNIGHT | 205/65R16 | 95T   | -  | 6J            | 209                | 672                   | 690           | 300                | D | D | B |
|      | ICE KNIGHT | 215/55R16 | 93T   | -  | 7J            | 226                | 642                   | 650           | 300                | C | D | B |
|      | ICE KNIGHT | 215/60R16 | 95T   | -  | 6½J           | 221                | 664                   | 690           | 300                | D | D | B |
|      | ICE KNIGHT | 215/65R16 | 98T   | -  | 6½J           | 221                | 686                   | 750           | 300                | C | D | B |
|      | ECOSNOW4X4 | 215/70R16 | 100T  | -  | 6½J           | 221                | 708                   | 800           | 300                | D | D | B |
|      | ICE KNIGHT | 225/60R16 | 98T   | -  | 6½J           | 228                | 676                   | 750           | 300                | C | D | B |
|      | ECOSNOW4X4 | 235/60R16 | 100H  | -  | 7J            | 240                | 688                   | 800           | 300                | D | D | B |
|      | ECOSNOW4X4 | 235/70R16 | 106T  | -  | 7J            | 240                | 736                   | 950           | 300                | D | D | B |
| 17   | ECOSNOW4X4 | 245/70R16 | 107T  | -  | 7J            | 248                | 750                   | 975           | 300                | D | D | B |
|      | ECOSNOW4X4 | 255/65R16 | 109T  | -  | 7½J           | 260                | 738                   | 1030          | 300                | D | C | B |
|      | FREEZE 4X4 | 255/70R16 | 111T  | -  | 7½J           | 260                | 764                   | 1090          | 300                | D | D | B |
|      | ECOSNOW4X4 | 265/70R16 | 112T  | -  | 8J            | 272                | 778                   | 1120          | 300                | D | C | B |
|      | ICE KNIGHT | 205/50R17 | 89H   | -  | 6½J           | 214                | 638                   | 580           | 300                | D | D | B |
|      | ICE KNIGHT | 205/55R17 | 95H   | XL | 6½J           | 214                | 658                   | 690           | 340                | C | D | B |
|      | ICE KNIGHT | 225/45R17 | 91H   | -  | 7½J           | 225                | 634                   | 615           | 300                | D | D | B |
|      | ICE KNIGHT | 225/50R17 | 94H   | -  | 7J            | 233                | 658                   | 670           | 300                | D | D | B |
|      | FREEZE S1  | 225/55R17 | 101H  | XL | 7J            | 233                | 680                   | 825           | 340                | C | D | B |
|      | FREEZE S1  | 235/55R17 | 103H  | XL | 7½J           | 245                | 690                   | 875           | 340                | C | D | B |
| 17   | FREEZE 4X4 | 245/70R17 | 110T  | -  | 7J            | 248                | 776                   | 1060          | 300                | D | D | B |
|      | FREEZE 4X4 | 265/65R17 | 112T  | -  | 8J            | 272                | 776                   | 1120          | 300                | D | D | B |

| INCH | Pattern    | Size      | LI/SS | XL | Measuring Rim | Section Width (mm) | Overall Diameter (mm) | Max.Load (kg) | Max.Pressure (KPA) |  |  |  |
|------|------------|-----------|-------|----|---------------|--------------------|-----------------------|---------------|--------------------|---|---|---|
| 18   | ICE KNIGHT | 215/50R18 | 92H   | -  | 7J            | 226                | 673                   | 630           | 300                | C   | D   | B   |
|      | FREEZE 4X4 | 235/65R18 | 106T  | -  | 7J            | 240                | 763                   | 950           | 300                | D   | D   | B   |
|      | ICE KNIGHT | 245/40R18 | 93H   | -  | 8½J           | 248                | 653                   | 650           | 300                | D   | D   | B   |
|      | ICE KNIGHT | 245/45R18 | 96H   | -  | 8J            | 243                | 677                   | 710           | 300                | D   | D   | B   |
|      | FREEZE 4X4 | 245/60R18 | 109T  | XL | 7J            | 248                | 751                   | 1030          | 340                | D   | D   | B   |
|      | ICE KNIGHT | 255/40R18 | 95H   | -  | 9J            | 260                | 661                   | 690           | 300                | D   | D   | B   |
|      | FREEZE 4X4 | 265/60R18 | 110T  | -  | 8J            | 272                | 775                   | 1060          | 300                | D   | D   | B   |
|      | ICE KNIGHT | 265/65R18 | 114T  | -  | 8J            | 272                | 801                   | 1180          | 300                | D   | D   | B   |
| 19   | ICE KNIGHT | 225/45R19 | 92H   | -  | 7½J           | 225                | 685                   | 630           | 300                | D   | D   | B   |
|      | ICE KNIGHT | 235/40R19 | 96H   | XL | 8½J           | 241                | 671                   | 710           | 340                | D   | D   | B   |
|      | ICE KNIGHT | 235/45R19 | 95T   | -  | 8J            | 236                | 695                   | 690           | 300                | D   | D   | B   |
|      | FREEZE 4X4 | 235/60R19 | 107T  | XL | 7J            | 240                | 765                   | 975           | 340                | D   | D   | B   |
|      | ICE KNIGHT | 245/35R19 | 93H   | XL | 8½J           | 248                | 655                   | 650           | 340                | D   | D   | B   |
|      | ICE KNIGHT | 245/40R19 | 98H   | XL | 8½J           | 248                | 679                   | 750           | 340                | D   | D   | B   |
|      | ICE KNIGHT | 245/45R19 | 98H   | -  | 8J            | 243                | 703                   | 750           | 300                | D   | D   | B   |
|      | ICE KNIGHT | 255/45R19 | 104T  | XL | 8½J           | 255                | 703                   | 900           | 340                | D   | D   | B   |
| 20   | FREEZE 4X4 | 255/55R19 | 111H  | XL | 8J            | 265                | 763                   | 1090          | 340                | D   | D   | B   |
|      | ICE KNIGHT | 255/60R19 | 113T  | XL | 7½J           | 260                | 789                   | 1150          | 340                | D   | D   | B   |
|      | FREEZE 4X4 | 265/55R19 | 113T  | XL | 8½J           | 277                | 775                   | 1150          | 340                | D   | D   | B   |
|      | ICE KNIGHT | 235/50R20 | 100T  | -  | 7½J           | 245                | 744                   | 800           | 300                | D   | D   | B   |
|      | ICE KNIGHT | 245/45R20 | 99H   | -  | 8J            | 243                | 728                   | 775           | 300                | D   | D   | B   |
| 21   | ICE KNIGHT | 255/40R20 | 101T  | XL | 9J            | 260                | 712                   | 825           | 340                | D   | D   | B   |
|      | FREEZE 4X4 | 255/55R20 | 110H  | XL | 8J            | 265                | 788                   | 1060          | 340                | D   | D   | B   |
| 22   | ICE KNIGHT | 265/45R21 | 108T  | XL | 9J            | 266                | 771                   | 1000          | 340                | D   | D   | B   |
| 22   | ICE KNIGHT | 265/40R22 | 106T  | XL | 9½J           | 271                | 771                   | 950           | 340                | D   | D   | B   |

| INCH | Pattern         | Size        | LI/SS    | PR   | Measuring Rim | Section Width (mm) | Overall Diameter (mm) | Max.Load (kg) | Max.Pressure (KPA) |  |  |  |
|------|-----------------|-------------|----------|------|---------------|--------------------|-----------------------|---------------|--------------------|---|---|---|
| 14   | WINTER DEFENDER | 165R14LT    | 96/95Q   | 8PR  | 4½J           | 165                | 620                   | 710           | 450                | D   | C   | B   |
|      | WINTER DEFENDER | 175R14LT    | 99/97Q   | 8PR  | 5J            | 177                | 636                   | 775           | 450                | D   | C   | B   |
|      | WINTER DEFENDER | 185R14LT    | 102/100Q | 8PR  | 5½J           | 188                | 650                   | 850           | 450                | D   | C   | B   |
|      | WINTER DEFENDER | 185R15LT    | 103/102Q | 8PR  | 5½J           | 188                | 674                   | 875           | 450                | D   | C   | B   |
|      | WINTER DEFENDER | 195R15LT    | 106/104Q | 8PR  | 5½J           | 196                | 693                   | 950           | 450                | D   | C   | B   |
|      | FREEZE S1       | 195/70R15C  | 104/102S | 8PR  | 6J            | 201                | 655                   | 900           | 450                | D   | C   | B   |
| 15   | WINTER DEFENDER | 215/70R15C  | 109/107Q | 8PR  | 6½J           | 221                | 683                   | 1030          | 450                | D   | C   | B   |
|      | WINTER DEFENDER | LT215/75R15 | 100/97Q  | 6PR  | 6J            | 216                | 709                   | 800           | 350                | D   | C   | B   |
|      | WINTER DEFENDER | 225/70R15C  | 112/110Q | 8PR  | 6½J           | 228                | 697                   | 1120          | 450                | D   | C   | B   |
|      | WINTER DEFENDER | LT235/75R15 | 104/101Q | 6PR  | 6½J           | 235                | 739                   | 900           | 350                | D   | C   | B   |
| 16   | WINTER DEFENDER | LT215/75R16 | 107/103Q | 8PR  | 6J            | 216                | 728                   | 975           | 450                | D   | C   | B   |
|      | WINTER DEFENDER | 6.50R16LT   | 107/103M | 10PR | 4½J           | 185                | 750                   | 975           | 550                | D   | C   | B   |
|      | WINTER DEFENDER | 7.00R16LT   | 111/107M | 10PR | 5½J           | 200                | 775                   | 1090          | 550                | D   | C   | B   |



# FROST BITE TW01



### Widened tread design and enhanced sidewall hardness

The widened tread design and enhanced sidewall hardness bring more precise handling stability to TW01.



### Low-temperature resistant soft tread rubber

Low-temperature resistant soft tread rubber ensures TW01 has better grip and shorter braking distance, improving driving safety.



### 3D groove design

The 3D grooves can ensure the strength of the tread, and the densely packed small grooves and tread patterns make the tire and snow tightly bite.



### Softer tread rubber

The softer tread rubber remains even at extremely low temperatures, providing TW01 with shorter braking distances and better starting acceleration performance.

M+S



Comfort



Snow-land steering



Asymmetrical pattern



Winter tires

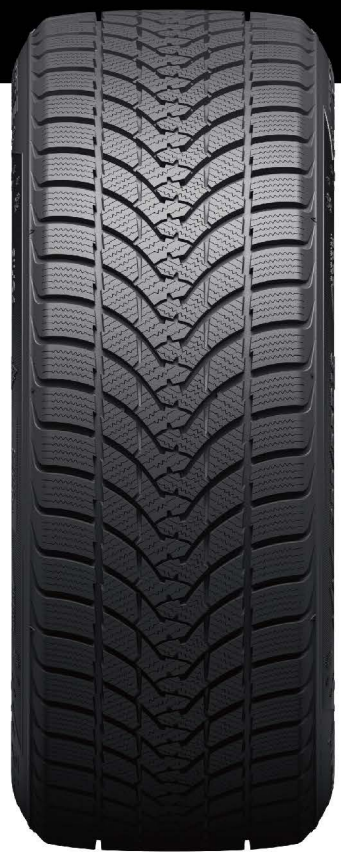
# FROST BITE TW01

| INCH | Size        | LI/SS | XL | Measuring Rim | Section Width (mm) | Overall Diameter (mm) | Max.Load (kg) | Max.Pressure (KPA) |   |   |   |
|------|-------------|-------|----|---------------|--------------------|-----------------------|---------------|--------------------|---|---|---|
| 17   | 215/50R17   | 95H   | XL | 7J            | 226                | 648                   | 690           | 340                | C | D | B |
|      | 215/55R17   | 94T   | -  | 7J            | 226                | 668                   | 670           | 300                | C | D | B |
|      | 215/60R17   | 96T   | -  | 6½J           | 221                | 690                   | 710           | 300                | C | D | B |
|      | 225/60R17   | 99T   | -  | 6½J           | 228                | 702                   | 775           | 300                | C | D | B |
|      | 225/65R17   | 102T  | -  | 6½J           | 228                | 724                   | 850           | 300                | C | D | B |
|      | 235/65R17   | 108H  | XL | 7J            | 240                | 738                   | 1000          | 340                | D | D | B |
| 18   | 215/55R18   | 95H   | -  | 7J            | 226                | 693                   | 690           | 300                | C | D | B |
|      | 225/45R18   | 95H   | XL | 7½J           | 225                | 659                   | 690           | 340                | C | D | B |
|      | 225/50R18   | 95H   | -  | 7J            | 233                | 683                   | 690           | 300                | D | D | B |
|      | 225/55R18   | 98T   | -  | 7J            | 233                | 705                   | 750           | 300                | D | D | B |
|      | 225/60R18   | 100T  | -  | 6½J           | 228                | 727                   | 800           | 300                | C | D | B |
|      | 235/45R18   | 98H   | XL | 8J            | 236                | 669                   | 750           | 340                | D | D | B |
| 19   | 235/50R18   | 97T   | -  | 7½J           | 245                | 693                   | 730           | 300                | D | D | B |
|      | 235/55R18   | 100T  | -  | 7½J           | 245                | 715                   | 800           | 300                | D | D | B |
|      | 235/60R18   | 103T  | -  | 7J            | 240                | 739                   | 875           | 300                | D | D | B |
|      | 225/55R19   | 99T   | -  | 7J            | 233                | 731                   | 775           | 300                | C | D | B |
|      | 235/50R19   | 99T   | -  | 7½J           | 245                | 719                   | 775           | 300                | C | D | B |
|      | 235/55R19   | 105T  | XL | 7½J           | 245                | 741                   | 925           | 340                | C | D | B |
| 20   | 245/55R19   | 103H  | -  | 7½J           | 253                | 753                   | 875           | 300                | C | D | B |
|      | 235/55R20   | 102T  | -  | 7½J           | 245                | 766                   | 850           | 300                | C | D | B |
|      | 245/50R20   | 102T  | -  | 7½J           | 253                | 754                   | 850           | 300                | D | D | B |
|      | 255/45R20   | 101H  | -  | 8½J           | 255                | 738                   | 825           | 300                | D | D | B |
|      | 255/50R20   | 109T  | XL | 8J            | 265                | 764                   | 1030          | 340                | D | D | B |
|      | 235/45R21   | 101T  | XL | 8J            | 236                | 745                   | 825           | 340                | D | C | B |
| 21   | 255/40R21   | 102T  | XL | 9J            | 260                | 737                   | 850           | 340                | D | C | B |
|      | * 265/45R21 | 108V  | XL | 9J            | 266                | 771                   | 1000          | 340                | C | C | B |
|      | 275/45R21   | 110T  | XL | 9J            | 273                | 781                   | 1060          | 340                | C | C | B |
| 22   | * 285/45R21 | 113V  | XL | 9½J           | 285                | 789                   | 1150          | 340                | C | C | B |
|      | 275/40R22   | 107H  | XL | 9½J           | 278                | 779                   | 975           | 340                | D | C | B |
|      | 285/45R22   | 114H  | XL | 9½J           | 285                | 815                   | 1180          | 340                | C | C | B |

\* Coming soon



# Blue Snow



### V-shaped single guide design

The "V"-shaped single-guide pattern endows the tire with powerful rain and snow drainage and drainage functions, making the handling more stable and comfortable in rainy and snowy weather



### Unique winter tread formula design

The unique winter tread formula design improves the flexibility and wear resistance of the rubber in severe cold seasons, ensuring the handling and braking performance of the tire.



### Three-dimensional groove design

Full-through grooves and a large number of three-dimensional sipes, the pattern blocks become softer, so that the tread produces more gripping edges when it contacts the road, especially on ice and snow roads to provide sufficient grip, tires on ice and snow roads The responsiveness on the vehicle is even better, which greatly improves the handling and safety of the vehicle



Comfort



Snow-land steering



Directional tread pattern



Winter tires

# Blue Snow

| INCH | Size      | LI/SS | XL | Measuring Rim | Section Width (mm) | Overall Diameter (mm) | Max.Load (kg) | Max.Pressure (KPA) |   |   |   |
|------|-----------|-------|----|---------------|--------------------|-----------------------|---------------|--------------------|---|---|---|
| 14   | 185/60R14 | 82H   | -  | 5½J           | 189                | 578                   | 475           | 300                | D | D | B |
|      | 185/65R14 | 86H   | -  | 5½J           | 189                | 596                   | 530           | 300                | D | D | B |
| 15   | 185/65R15 | 88H   | -  | 5½J           | 189                | 621                   | 1235          | 300                | D | D | B |
|      | 195/55R15 | 85H   | -  | 6J            | 201                | 595                   | 515           | 300                | D | D | B |
|      | 195/65R15 | 91V   | -  | 6J            | 201                | 635                   | 1356          | 300                | D | D | B |
| 16   | 205/65R15 | 94H   | -  | 6J            | 209                | 647                   | 670           | 300                | D | C | B |
|      | 205/55R16 | 91V   | -  | 6½J           | 214                | 632                   | 1356          | 300                | D | C | B |
|      | 205/60R16 | 96H   | XL | 6J            | 209                | 652                   | 1565          | 340                | C | C | B |
|      | 215/55R16 | 97H   | XL | 7J            | 226                | 642                   | 730           | 340                | C | C | B |
| 17   | 215/60R16 | 99H   | XL | 6½J           | 221                | 664                   | 1709          | 340                | C | C | B |
|      | 215/65R16 | 98H   | -  | 6½J           | 221                | 686                   | 1653          | 300                | D | C | B |
|      | 225/55R16 | 99V   | XL | 7J            | 233                | 654                   | 775           | 340                | C | C | B |
| 18   | 225/45R17 | 94V   | XL | 7½J           | 225                | 634                   | 1477          | 340                | C | C | B |
|      | 225/40R18 | 92H   | XL | 8J            | 230                | 637                   | 1389          | 340                | D | C | B |
| 18   | 245/45R18 | 100V  | XL | 8J            | 243                | 677                   | 800           | 340                | C | C | B |
|      | 255/55R18 | 109V  | XL | 8J            | 265                | 737                   | 1030          | 340                | C | C | B |

